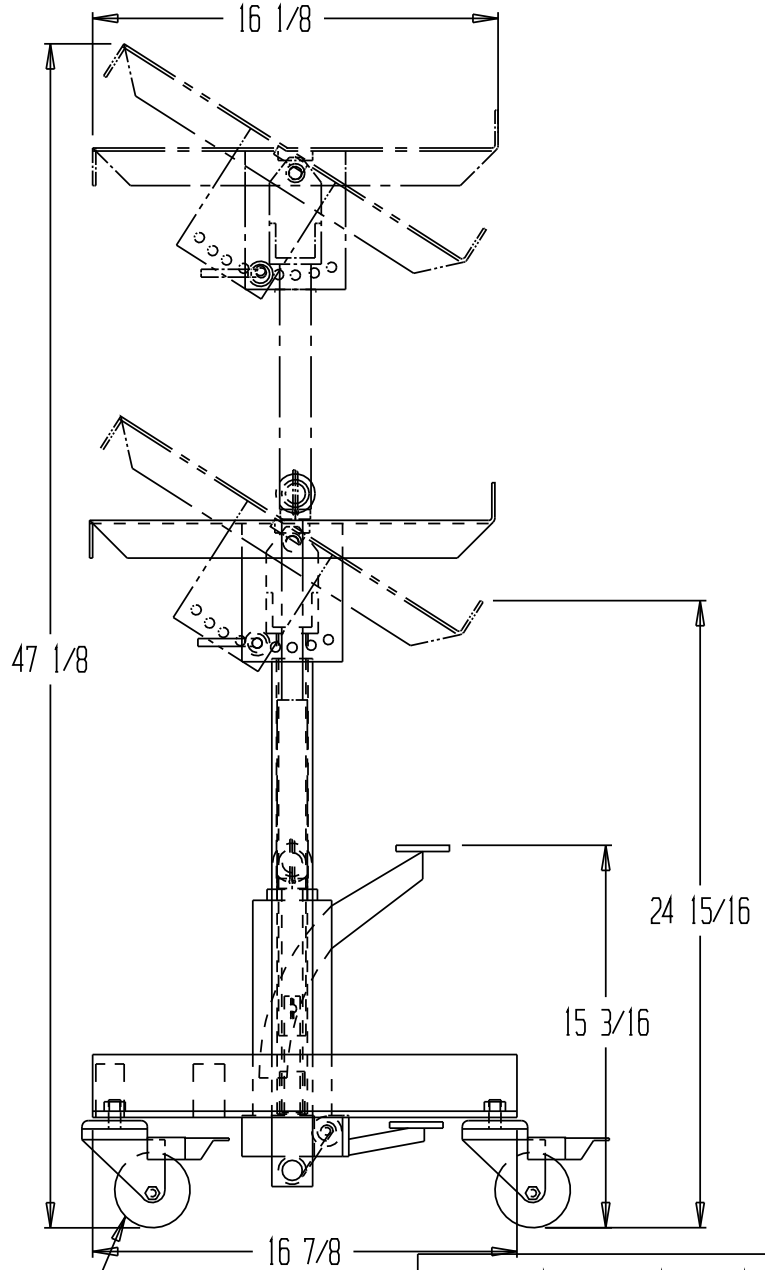
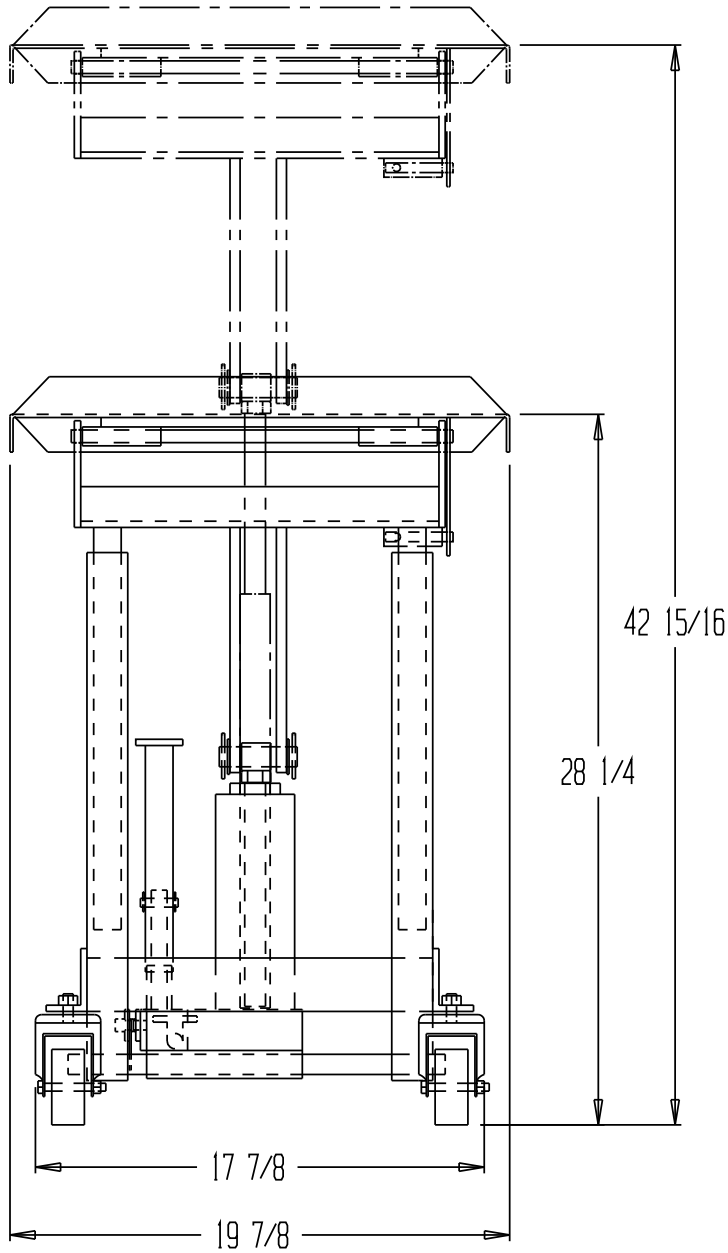


HYDRAULIC WORK POSITIONER - WT-2016-FP



CASTERS
5 7/8" W x 4 1/4" H

PRODUCTION WILL START UPON
RECEIPT OF SIGNED APPROVAL
DRAWING

STANDARD FEATURES

MODEL NUMBER: WT-2016-FP
CAPACITY: 330 LBS.
OVERALL SIZE: 28 1/4"H x 19 7/8"W x 21"D
SERVICE RANGE: 28 1/4" TO 42 15/16"
PLATFORM TILT ANGLES: 0, 10, 20, 30, 40 DEGREES
MATERIAL: STEEL
COLOR: BLUE
HYDRAULIC FOOT PUMP
TELESCOPING CYLINDER
LOCKING CASTERS

SPECIAL FEATURES

NONE

**SPECIAL UNITS ARE NON-RETURNABLE
*AVAILABLE AT ADDITIONAL COSTS

APPROVAL

I, the undersigned, hereby approve this print
[] As drawn [] As marked

This includes my approval of design & dimensions.

Signed: _____

Date: _____

DISTRIBUTOR'S NAME: VESTIL MANUFACTURING CORP.		P.O.#:
DRAWN BY: CJD		W.O.#:
DATE: 4/23/08	SALES:	
REFERENCE:	DRWG./FILE NAME: WT-2016-FP	
SCALE 1 : 8		