

JESCOHUSKYDUMPER® LARGE VOLUME LOW PROFILE HOPPERS SUPER HEAVY DUTY STRUCTURAL BASE

7 gauge body

1/4" base

Non-stackable

Non stock item, manufactured to order



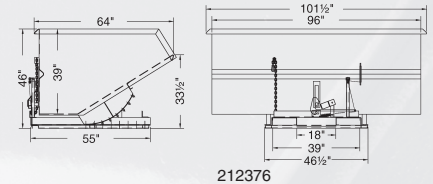
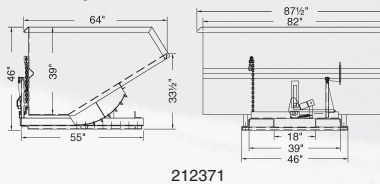
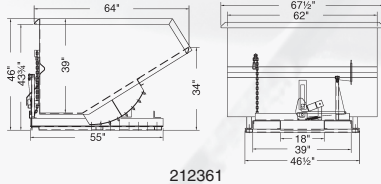
3 1/2 cu. yd. shown

Wide body design and convenient working height of 46" make these units natural for handling large, long bulky items.

Lids not available.

Part No	Capacity	Dimensions	Fork Openings	Weight
**212361	2 1/2 cu. yd / 6000 lbs	64"L x 67 1/2"W x 46"H	3" x 10 1/2" x 39" OC	995 lbs
**212371	3 cu. yd / 6000 lbs	64"L x 87 1/2"W x 46"H	3" x 10 1/2" x 39" OC	1085 lbs
**212376	3 1/2 cu. yd / 6000 lbs	64"L x 101 1/2"W x 46"H	3" x 10 1/2" x 39" OC	1225 lbs

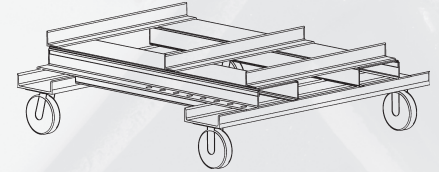
** Special base required for use with casters. See below.



Special bases required when ordering casters on certain hoppers

Hoppers marked with two asterisks (**) require special bases (part no. 230600) in order to be equipped with casters. These special bases are in addition to the price of the hopper, as are the casters.

Contact a sales representative for further information and pricing.



JESCOHUSKYDUMPER® LIDS

Lids are optional on units up to 2 1/2 cubic yard capacity. These units help in meeting environmental regulations and insurance codes. Contents of hoppers stay out of sight for a neater appearance.

Two piece lids are available for 1 cu. yd. through 2 1/2 cu. yd. capacity hoppers. Specify type A or type C lid.

Not available on low profile or narrow hoppers.

14 gauge material. Painted Vista Green.



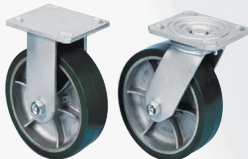
Type A
Front half opens only



Type C
Both halves open

Part No	Hopper Capacity	Weight
220044	1 cu. yd.	65 lbs
220054	1 1/2 cu. yd.	92 lbs
220064	2 cu. yd.	106 lbs
220074	2 1/2 cu. yd.	106 lbs

JESCOHUSKYDUMPER® CASTER OPTIONS



Hoppers with casters are easy to roll. Available in three types: Semi Steel (SS), Phenolic (PH) or Moldon Rubber (MR). Casters provide mobility on most surfaces.

Other caster options available.

Casters are welded to base of hoppers unless otherwise specified.

Capacity must match or exceed capacity of hopper.

Part No	Dimensions	Material	Capacity	Weight
240211	6" Dia. x 2"W	SS	4800 lbs	34 lbs
240231	6" Dia. x 2"W	PH	4000 lbs	28 lbs
240251	6" Dia. x 2"W	MR	2000 lbs	28 lbs
240351	6" Dia. x 2 1/2"W	MR	2400 lbs	38 lbs
240311	6" Dia. x 2 1/2"W	SS	6000 lbs	51 lbs
240331	6" Dia. x 2 1/2"W	PH	6000 lbs	37 lbs
240451	8" Dia. x 2"W	MR	2400 lbs	43 lbs
240511	8" Dia. x 2 1/2"W	SS	6000 lbs	61 lbs
240531	8" Dia. x 2 1/2"W	PH	6000 lbs	46 lbs