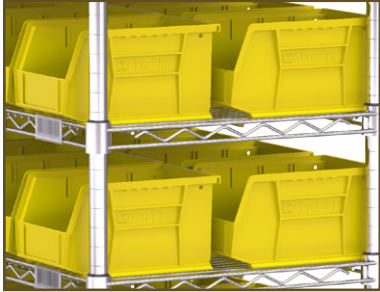


AkroBins®

Industry-leading hanging and stacking bins!

- Heavy-duty bins stack, sit on shelving or hang from panels and rails
- Optional dividers allow you to create customizable compartment sizes



The new bin size, 30237, can be used back to back as a two-bin Kanban solution on 18" deep shelves!



30237



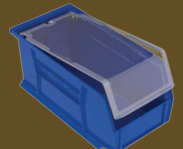
30250 with 40245CRY
Clear Length Divider



30260 with 40260
Length Divider



30230 with 41230
Width Dividers



30230 with
30231CRY Lid



30230 with 29230
Adhesive Label



40599 Bin
Retainer Clip



40412 Kanban
Extended
Label Holders
Turn your existing bin
inventory system into
a Kanban system

AkroBins Model No.	Outside Dimensions (In.)			Bottom Dimensions (In.)				Capacity/Quantity		Accessories							
	L	W	H	L	W	H	X	Bin Load Capacity On Rack	Bin Ctn. Qty.	Black Length Dividers‡	Black Width Dividers‡	Clear Length Dividers‡	Divider Pkg. Qty.	Bin Lids	Lid Pkg. Qty.	Adhesive Labels	Card Stock
30210* ^{SS}	5-3/8	4-1/8	3	4-3/4	3-7/16	2-13/16	4	10 lbs.	24	40210 (1)	–	40210CRY	6	30211CRY	24	29202	29301
30220* ^{SS}	7-3/8	4-1/8	3	6-3/4	3-7/16	2-13/16	6	10 lbs.	24	40220 (1)	–	40220CRY	6	30221CRY	24	29202	29301
30237	9-1/4	6	5	8-9/16	4-7/8	4-3/4	7-1/4	20 lbs.	12	40237 (1)	–	40237CRY	6	–	–	29203	29302
30224*	10-7/8	4-1/8	4	10-1/4	3-3/16	3-3/4	9	20 lbs.	12	40224 (1)	–	40224CRY	6	30225CRY	12	29202	29301
30230* ^{SS}	10-7/8	5-1/2	5	10-1/4	4-3/8	4-3/4	9	30 lbs.	12	40230 (1)	41230 (3)	40230CRY	6	30231CRY	12	29203	29302
30234* ^{SS}	14-3/4	5-1/2	5	14-1/16	4-3/8	4-3/4	12-13/16	50 lbs.	12	40234 (1)	–	40234CRY	6	–	–	29203	29302
30239* ^{SS}	10-3/4	8-1/4	7	10	6-9/16	6-3/4	8	50 lbs.	6	40239 (1)	–	40239CRY	6	–	–	29203	29302
30240* ^{SS}	14-3/4	8-1/4	7	14	6-9/16	6-3/4	12	60 lbs.	12	40245 (1)	–	40245CRY	6	–	–	29203	29302
30265	18	8-1/4	9	17-1/8	6-3/4	8-1/4	14-1/2	60 lbs.	6	40265 (1)	–	40265CRY	6	–	–	29203	29303
30235*	10-7/8	11	5	10-1/4	10	4-3/4	9	50 lbs.	6	40230 (3)	–	40230CRY	6	30236CRY	6	29203	29302
30260	18	11	10	17	9-1/2	9-3/4	14-3/16	60 lbs.	6	40260 (3)	–	40260CRY	6	–	–	29203	29303
30255	10-7/8	16-1/2	5	9-3/4	15	4-3/4	9	60 lbs.	6	40230 (3)	–	40230CRY	6	–	–	29203	29302
30250* ^{SS}	14-3/4	16-1/2	7	14	14-3/4	6-3/4	12	75 lbs.	6	40245 (3)	41250 (6)	40245CRY	6	–	–	29203	29302
30270	18	16-1/2	11	17-1/8	14-3/4	10-1/4	14	75 lbs.	3	40270 (3)	41270 (6)	40270CRY	6	–	–	29203	29303
30320	8-5/8	33	5	7	31-1/2	4-3/16	6	80 lbs.	4	40321 & 40220 (7)	–	40220CRY	7 / 6	30321	4	–	–

One color per carton: Specify Red, Blue, Yellow, Stone, Clear, Green or Black. Order in carton quantities. CAUTION: When using bins with hanging systems, do not exceed the weight capacity for the rack, which may be less than the total sum of bin capacities. 40321=Full Divider; 40220=Short Divider. *Available in Specialty Colors: Purple and Light Blue. †Available in Additional Colors: SS=Sandstone, TC=Terra Cotta and HG=Hunter Green. ‡()=Max. # of divider slots per bin.