

ABOUT STRONG HOLD PRODUCTS

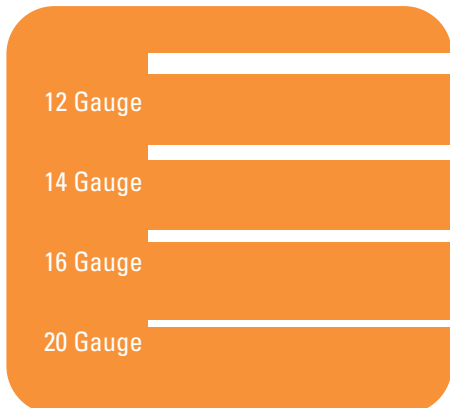
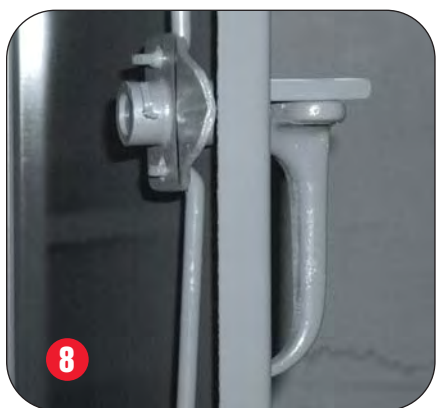


KEY BENEFITS

- 1 Wrap around design, one piece body, 12-gauge steel.
- 2 Two doors per cabinet, 12-gauge steel, 1" return flange, 200 degree swing, interlocking left hand door.
- 3 7-gauge steel legs, provision for lagging, 6" sweep space, 3/4" hole in foot pad to anchor cabinet.
- 4 Adjustable shelves, 14-gauge steel. (Shelf capacities listed are based on uniform loading.)
- 5 Shelves attached with 3/8" carriage bolts.
- 6 Three-point locking device, 3/8" latch rod, 3/16" latch plate, 9/16" hole in handle and handle stop to accommodate up to 1/2" padlock shackle.
- 7 Flush bottom - 12-gauge steel.
- 8 Cast handle, padlock tang, 3/8" angle receiver.
- 9 8-gauge hinge leaf, 5/16" hinge pin, 3/4" receiver.
- 10 Our products are shipped completely assembled and ready to use.

GAUGE US BY OUR GAUGE  
12-GAUGE IS SUPERIOR

How strong is 12-gauge steel? The chart below should help give you an idea of just how strong we are.



## PAINT OPTIONS

### STOCK COLOR

Our stock color is #10 Dark Gray. The eight colors listed below, as well as your choice of colors, can be available for an additional charge.

### OPTIONAL POWDER COAT FINISH

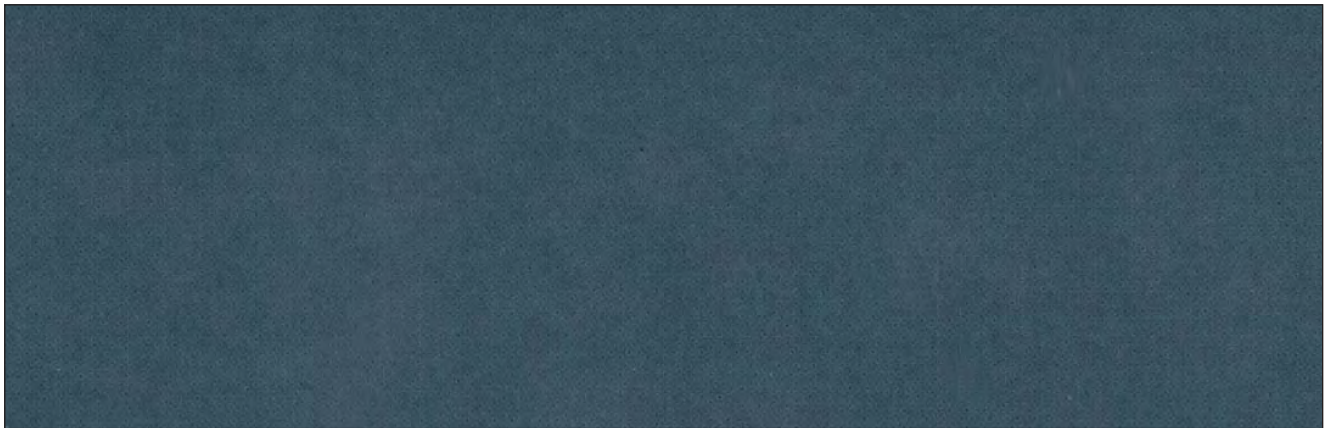
Powder coating has become a very popular process for paint application. Strong Hold Products' powder provides a durable finished product. Product life is

extended with our powder by providing excellent color retention, chemical and abrasion resistance. Coatings are consistent and environmentally safe.

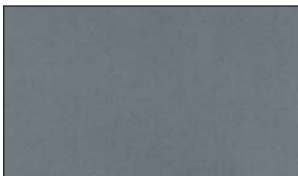
At an additional charge our standard dark gray color is available for powder coating. This special finish will require longer product delivery times.

Distributed by:  
Custom Equipment Company  
866-333-0728  
sales@custommhs.com  
www.custommhs.com

## ADDITIONAL COLOR OPTIONS



#10/Dark Gray



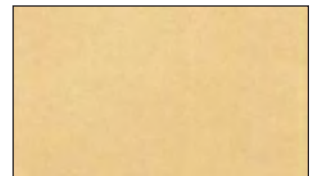
#20/Medium Gray



#30/Steeltone



#60/Signal Red



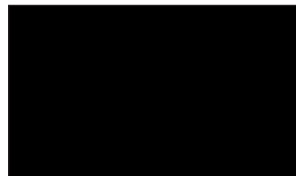
#70/Buf



#40/Dark Blue



#50/Safety Yellow



#80/Midnight Black



#90/White

*Representation of the colors above is as true as printing techniques allow.*

**NEW!** MULTI-SIZE ALL BIN CABINET



This all bin cabinet features 3 different sizes of bins. There are small ones (4 1/8" wide x 7 3/8" deep x 3" high) on the doors and the top three rows of the body. Then you have our standard large bins (8 1/4" wide x 14 3/4" deep x 7" high) for the middle three rows of bins and then you have the extra-wide bins (16 1/2" wide x 14 3/4" deep x 7" high) for the bottom three rows of bins.

Product Number...BS-15399 Overall Height...78"  
Width x Depth x Height... 60" x 24" x 72"  
Weight...712 lbs

**NEW!** BIN CABINET WITH DRAWERS



This cabinet features bins and drawers. This has our small bins on the doors and two rows of our large bins at the top of the body. Then under that there are seven 4" high drawers and two 7" high drawers. This can also be customized to fit your needs, we can change the size of the drawers or add more bins, whatever you need.

Product Number...BS-15400 Overall Height...78"  
Width x Depth x Height... 48" x 24" x 72"  
Weight...1063 lbs.

MULTIFACETED METAL BIN STORAGE



This multifaceted 12-gauge metal storage cabinet comes with 72 openings that measure 7 7/16" wide x 7 7/16" high. When organization is a must for your heavy small parts, tools, etc., this cabinet will hold the load. The standard overall height is 78."

Product Number...66-247-720P Overall Height...78"  
Width x Depth x Height... 72" x 24" x 72"  
Weight...1218 lbs

99-OPENING METAL BIN STORAGE



This super tough metal bin storage has 99 openings, that measure 5" high x 6" wide. This cabinet comes completely assembled with a 3 point locking system. This cabinet can be used in any rugged or abuse encountered area.

Product Number...56-1610-990P Overall Height...78"  
Width x Depth x Height... 60" x 16" x 72"  
Weight...887 lbs.

SLIM-LINE METAL BIN STORAGE



This 12-gauge welded bin storage unit is just the right depth for those narrow places. The cabinet has 54 openings that are 6" wide x 9" high. The depth is 18" and can store heavy small tools and parts. The color shown is buff. Other colors are available.

Product Number...3.57.11-188-540P Overall Height...95"  
 Width x Depth x Height...41" x 18" x 95" Weight...778 lbs.

EXTRA-WIDE METAL BIN STORAGE



With this extra-wide storage cabinet you can organize all your small parts and tools. It also provides an area located on the front of the opening for labeling. Use this unit in tool rooms or at workstations. This unit is manufactured from 12-gauge steel and has a gray enamel finish. There are 66 openings that measure 4 1/2" high x 12" wide.

Product Number...6.55.6-3610-660P Overall Height...72"  
 Width x Depth x Height...77" x 36" x 66" Weight...1621 lbs.

METAL BIN STORAGE



This unit is equipped with adjustable vertical dividers. There are no legs so it can be used in forming solid walls in maintenance and store-house departments.

Product Number...46-298PH-54VD-SB  
 Width x Depth x Height...48" x 29" x 72"  
 Weight...960 lbs

OPEN-METAL BIN STORAGE



This 36" wide unit comes with adjustable vertical dividers in two different size heights, 4 1/2" high and 8 1/2" high. The vertical dividers are adjustable on 2" centers. Skid legs are provided for ease in mobility.

Product Number...36-CSU-368PH/51VD-SB Overall Height...78"  
 Width x Depth x Height...36" x 36" x 72" Weight...891 lbs

**MULTI-DIVIDER BIN STORAGE CABINET**

For the separation of your storage needs, we offer our floor model cabinet with 12-gauge adjustable dividers. Same sturdy construction as our standard 12-gauge cabinets except with more storage versatility.



Product Number	Dimensions W x D x H	Overall Height	Shelves	Shelf P/N	Shelf Capacity	Weight
36-246PH/42VD	36" x 24" x 72"	78"	6	3-24S	1425	602
46-246PH/42VD	48" x 24" x 72"	78"	6	4-24S	900	716
56-246PH/42VD	60" x 24" x 72"	78"	6	5-24S	1225	830
66-246PH/42VD	72" x 24" x 72"	78"	6	6-24S	1125	944

**TWO-SHIFT STORAGE CABINET**

This two shift cabinet fits great in areas where space is limited. It has 2 locking handles and divided in the center. There are 40 adjustable dividers and more can be added. This cabinet is shown in Miller Blue. Other colors are available.



Product Number...66-DS-242-8PH/40VD-SB Overall Height...78"  
Width x Depth x Height...72" x 24" x 72" Weight...1126 lbs.

**COUNTER HIGH TWO-SIDED  
METAL BIN STORAGE**

To help accommodate assembly lines and where multiple storage is needed, this cabinet is loaded with bin storage space. Bins are located on the back as well as the front. There are 56 openings on each side, measuring 6" wide x 6" high x 10" deep. We have added leg levelers to adjust your cabinet to an uneven surface.



Product Number...7.13.3-248-1120P Overall Height...39"  
Width x Depth x Height... 85" x 24" x 39" Weight...838 lbs.

**SEE-THRU RACK**

This pass thru bin rack is used in store rooms when doors aren't available to obtain small inventory parts. This item measures 60" wide x 16" deep x 72" high, overall height is 78." Each opening is 11" wide x 10" high. Other sizes available at your request.



Product Number...56-NB-165-300P Overall Height...78"  
Width x Depth x Height... 60" x 16" x 72" Weight...611 lbs.