

ABOUT STRONG HOLD PRODUCTS

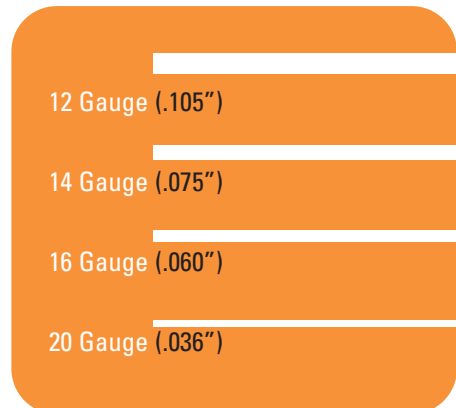


KEY BENEFITS

- 1 Wrap around design, one piece body, 12-gauge steel.
- 2 Two doors per cabinet, 12-gauge steel, 1" return flange, 200 degree swing, interlocking left hand door.
- 3 3/16" steel legs, provision for lagging, 6" sweep space.
- 4 Adjustable shelves, 14-gauge steel. (Shelf capacities listed are based on uniform loading.)
- 5 Shelves attached with 3/8" carriage bolts.
- 6 Three-point locking device, 3/8" latch rod, 3/16" latch plate.
- 7 Flush bottom - 12-gauge steel.
- 8 Cast aluminum-bronze alloy handle, padlock tang, 3/8" angle receiver.
- 9 8-gauge hinge leaf, 5/16" brass hinge pin, 3/4" receiver.

GAUGE US BY OUR GAUGE 12-GAUGE IS SUPERIOR

How strong is 12-gauge steel? The chart below should help give you an idea of just how strong we are.



HELPFUL HINTS

DIMENSION LISTINGS

Dimensions given are outside unless otherwise stated and are rounded to the nearest inch where appropriate.

QUICK SHIP

Most products are available on a “quick-ship” basis, ♦ indicates stock items.

LOAD CAPACITIES

Load capacities listed in the charts are based on uniform loading.

PAINT OPTIONS

ANTIMICROBIAL PAINT

Designed primarily for beverage, food and pharmaceutical applications, while providing a level of cleanliness and protection between scheduled cleanings. This compound is inorganic. While incorporated at the point of manufacture, the additives are a permanent part of the ingredient in the paint. It is odorless, tasteless and colorless, the additive will not leech out or evaporate, allowing them to continuously fight the growth of microbes. There is an additional charge for this paint process.

FINISH COAT PRESERVATIVE INTERSEPT

Strong Hold Products now offers paint that contains the preservative Intersept, which protects the cured paint film from bacteria, mold and premature deterioration due to their presence. There is an additional charge and lead-time for this finish. For more information please visit <http://www.interfaceflooring.com/products/diversity/performance/intersept.html>

POWDER COAT FINISH

Powder coating has become a very popular process for paint application. Strong Hold Products’ powder provides a durable finished product. Product life is extended with our powder by providing excellent color retention, chemical and abrasion resistance. Coatings are consistent and environmentally safe.

At an additional charge our standard dark gray color is available for powder coating. This special finish will require longer product delivery times.

tom@custommhs.com

OPTIONS

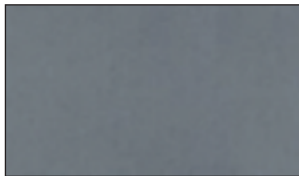
Caster/push handle option features 2 each 6” diameter x 2” wide swivel and rigid casters with mold-on rubber steel wheels. A 6” floor lock keeps the unit stationary when engaged. The push handle aids mobility.

STOCK COLOR

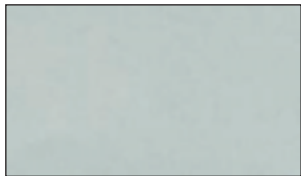
Our stock color is #10 Dark Gray. Eight other color finishes are available for an additional charge. See chart below. Metallic Silver (#95) is also available upon request. (not pictured)



#10/Dark Gray



#20/Medium Gray



#30/Steeltone



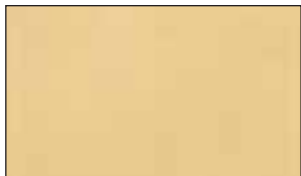
#40/Dark Blue



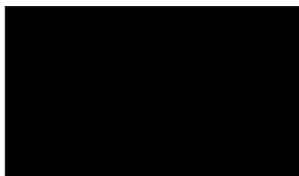
#50/Safety Yellow



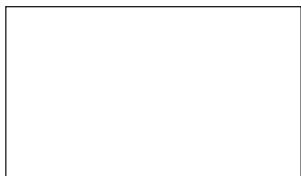
#60/Signal Red



#70/Buf



#80/Midnight Black



#90/White

Representation of the colors above is as true as printing techniques allow.

CUSTOM COLOR CABINETS

CORPORATE COLORS

Our products may be painted to compliment your plant's interior or your corporate colors, making your facility a cleaner, more attractive place to work.

TEAM COLORS

Let the world know who you root for by ordering your storage product in the team colors of your choice.



STANDARD CABINETS

THE ORIGINAL CLASSIC

ALL-WELDED DESIGN IS BUILT TO BE A TRUE SURVIVOR IN TODAY'S ROUGH AND RUGGED MANUFACTURING ENVIRONMENT

OUR NUMBER ONE SELLER: FLOOR MODEL

Strong Hold's all welded EXTRA HEAVY DUTY storage cabinets are the smart way to store equipment. Manufactured from 12-gauge steel, these cabinets have all the Strong Hold features to last a lifetime.

These features include adjustable 14-gauge shelves with up to 1900# capacity each and can be adjusted in 2" increments. The three-point locking device, includes a hasp built into the handle for use with a padlock. The 7-gauge legs are welded on to provide mobility in lifting in order to move from one area to another.



YOU HAVE MADE THESE OUR BEST SELLING CABINETS. These heavy duty 12-gauge steel models provide protection for valuable tools and machine parts. These cabinets are built for "rough and tough" industrial use. More shelves can be added for versatility.

Product Number	Dimensions (W x D x H)		OAH	Shelves	Shelf		
					P/N	Capacity	Weight
◆ 35-243	36"	24" x 60"	66"	3	3-24C	1900	406
◆ 36-204	36"	20" x 72"	78"	4	3-20C	1600	435
◆ 36-244	36"	24" x 72"	78"	4	3-24C	1900	475
◆ 45-243	48"	24" x 60"	66"	3	4-24C	1200	489
◆ 46-244	48"	24" x 72"	78"	4	4-24C	1200	573
◆ 55-243	60"	24" x 60"	66"	3	5-24C	1650	595
◆ 56-244	60"	24" x 72"	78"	4	5-24C	1650	699
◆ 65-243	72"	24" x 60"	66"	3	6-24C	1525	726
◆ 66-244	72"	24" x 72"	78"	4	6-24C	1525	856