



WIRE DECK



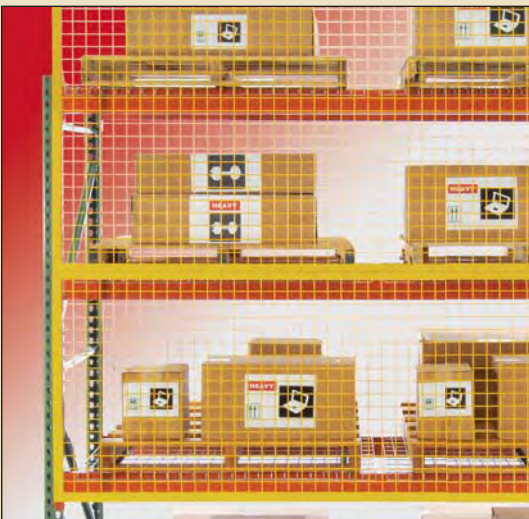
Wireway Husky is the only pallet rack manufacturer to produce its own wire deck. This means you get a wire deck engineered to fit right and meet the performance demands of professional material handlers. Wireway Husky's wire deck is the solution for both new and existing pallet rack systems. Numerous designs are available for a variety of capacity and application needs covering all aspects of both manufacturing and distribution. Installs quickly with no tools and is an excellent choice for facilities with sprinkler systems. Meets all fire and safety regulations.



PICK WIRE



Pick Wire, the simple but elegant innovation from Wireway Husky. This one-of-a kind deck turns standard, single-deep frames into two-sided picking solutions. The 3" overhang in tandem with the sloped design provides both a clear view and easy access to manually handled boxes or bins. Best of all the design allows for an extra beam level over five or six levels, meaning more storage capacity than standard flat wire decks. As with all Wireway Husky products, you can count on a wide selection of sizes and capacities, and our famous 48-hour and X-Treme Shipping programs.



RACK GUARD

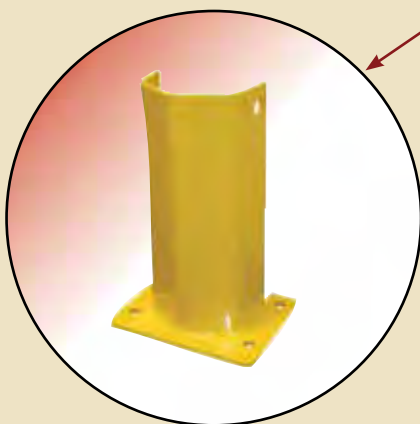
Prevent Materials from Falling into Aisles!

Rack Guard is the economical answer to rack safety and the increasing demands of regulatory agencies.

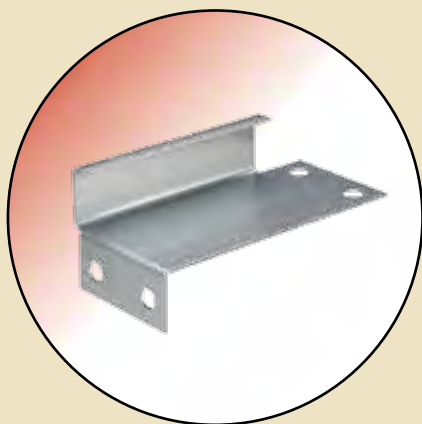
Our panels attach to pallet rack systems using spacer clips. 8-gauge, 2" x 2" square welded steel wire mesh welded to a steel angle frame encloses the rack while still providing inventory visibility. Yellow Finish.

Accessories

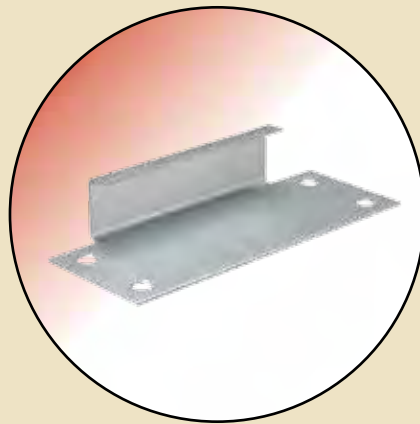
Floor Mount or Bolt-On



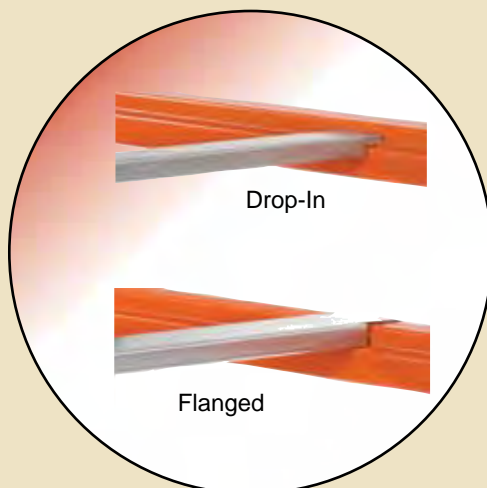
Post Protectors
Protects base of upright frames from lift trucks to minimize



Wall Ties
Secures upright frames to walls for added strength and to help prevent overturning.



Row Spacers
Ties rows of rack together for proper alignment and added strength.



Crossbars
Spans gap between beams to help prevent pallets from falling through.



Fork Entry Bars



Drum Cradle