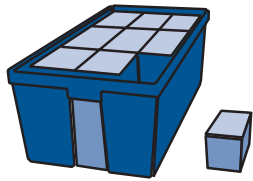
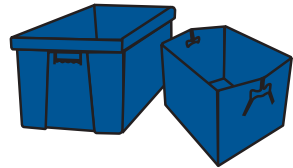


Hand-Held Containers Overview



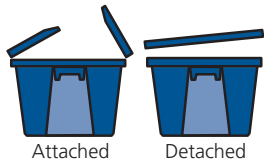
What size containers do I need?

Consider your product mix, material handling procedures and product weight. A container that accommodates 90% or more of the items you ship is ideal. Also consider the type of freight carrier - by maximizing trailer cube, you can save more than 15% on shipping expenses.



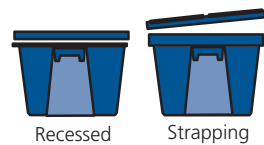
What material should I choose?

The choice of what container works best - whether it is metal, plastic, paperboard or other - depends on the specific operation and the product being shipped. Ideally, it will suit all the requirements of the application and provide the lowest, long-term cost. The savings of reusable plastic containers versus cardboard are well documented, and few companies can afford the high cost of throw-away containers.



Attached

Detached

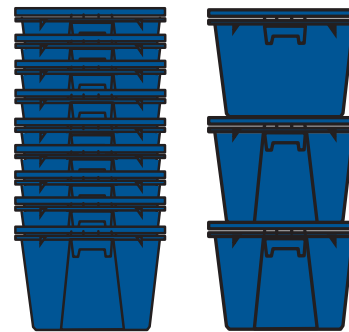


Recessed

Strapping

What type of lid is best?

There are many lid types: attached, detached, recessed and strapping. Detached lids permit ease of access to the container, while attached lids save time in handling and are less likely to be lost. Recessed lids aid in stacking by providing a perimeter lip, but limit internal space. Strapping lids allow for easy banding.



What other qualities are important?

Nestability – Nesting containers can save as much as 80% of the cube in return trips and in staging empties for return. Nesting is made possible by the taper of the container's sidewalls.

Stackability – Positive stacking containers not only save space in storage and shipping, but they also simplify handling because they are easier to move. Stacking ability is limited to the load-bearing capacity of the bottom container in the stack – to protect both the contents and the container against crushing.

Did You Know...?

Buckhorn just celebrated the 50th anniversary of the first plastic bakery tray. In 1965, Buckhorn created the tray for the Kroger Co., starting an industry-wide conversion. In fact, Buckhorn has a history of innovations in the hand-held category. We also developed the first attached lid, reusable distribution containers in the 1970s for shipping, picking and storing. And in the early 80s, Buckhorn introduced the first reusable container and pallet system for General Motors. Today, these modular nesting containers are still being used on assembly lines to deliver superior product protection and improve vehicle quality.



The best thing since sliced bread

Attached Lid Containers

Buckhorn offers Attached Lid Containers in many sizes and styles for shipping, picking and storage. Ideal for applications in distribution, grocery and general manufacturing, these containers deliver long-lasting, cost-saving performance.

Features and Benefits

- Containers nest for maximum space usage with lids open
- Ergonomic handles for easy lifting
- Easy-to-clean interiors
- Injection-molded HDPE construction resists impact, moisture and most chemicals
- Use with temperatures of -20° to 120° F
- Quick release textured label area on select models
- Customization and identification options available
- Backed by a one-year limited warranty
- 100% recyclable

Options

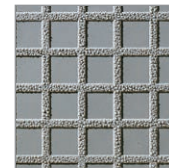
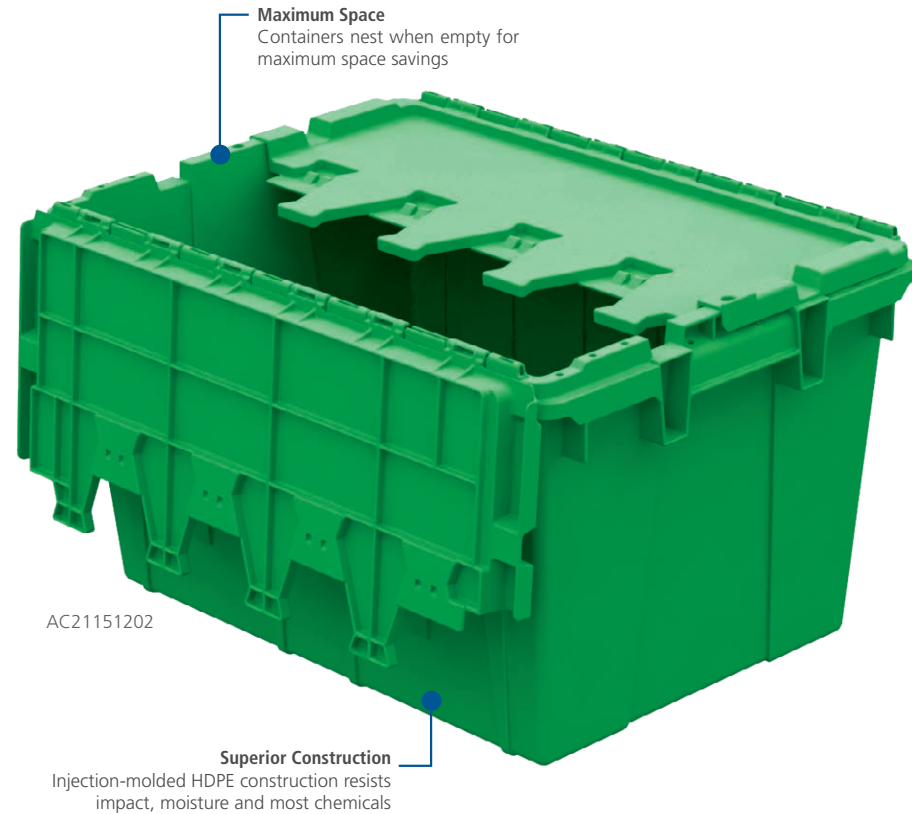
- Hot Stamps
- ID Labels
- Label Placards
- Cardholders
- Bar Coding
- Sequential Numbering
- Standard Colors

See p. 77-80 for more information.

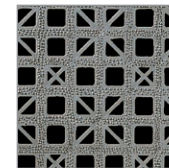
Compatible Components

| Hand-Held Container | Dolly |
|--|------------------------|
| AC21150902, AC21150921, AC21151202, AC21151221, AR21151702 | DY20140500, DY36200500 |

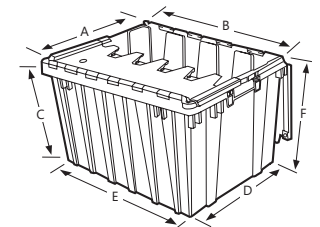
See p. 48 for more information.



Solid/Textured Bottom



Open/Textured Bottom



Capacity is dependent upon application and use environment. Check with Buckhorn for suitability in your application. Specifications subject to change without notice.
All dimensions are approximate.

Attached Lid Specifications

| Model No. | Footprint | Description | Dimensions (in.) | | | | | | Weight Tare lbs. | Capacity | | Lid Type | Shipping | | |
|--------------------------------|-----------------|-------------------------------------|------------------|--------|--------|---------------|--------|---------------|------------------------|----------------|-------------------|-----------|--------------------|---------|--------|
| | | | Outside Top | | | Inside Bottom | | | | Weight lbs. | Volume cu. ft. | | Truck Capacity 53' | | |
| | | | L" (A) | W" (B) | H" (C) | L" (D) | W" (E) | Usable H" (F) | | | | | Nest Ratio | Stacked | Nested |
| Attached Lid Containers | | | | | | | | | | | | | | | |
| AC21150902 | 21" x 15" x 9" | Solid/Textured Bottom | 21.8 | 15.1 | 9.6 | 18.4 | 13.0 | 8.1 | 5.2 | 60 | 1.1 | Recessed | 4.3:1 | 1991 | 4872 |
| | mm/kg/l | | 553.7 | 383.5 | 243.8 | 467.4 | 330.2 | 205.7 | 2.4 | 27 | 31.1 | | | | |
| AC21150921 | 21" x 15" x 9" | Open/Textured Bottom | 21.8 | 15.1 | 9.6 | 18.4 | 13.0 | 8.1 | 5.3 | 60 | 1.1 | Recessed | 4.3:1 | 1991 | 4872 |
| | | | 553.7 | 383.5 | 243.8 | 467.4 | 330.2 | 205.7 | 2.4 | 27 | 31.1 | | | | |
| AC21151202 | 21" x 15" x 12" | Solid/Textured Bottom | 21.8 | 15.2 | 12.5 | 17.9 | 12.5 | 11.1 | 5.6 | 60 | 1.4 | Recessed | 5:1 | 1448 | 4320 |
| | | | 553.7 | 386.1 | 317.5 | 454.7 | 317.5 | 281.9 | 2.5 | 27 | 39.6 | | | | |
| AC21151221 | 21" x 15" x 12" | Open/Textured Bottom | 21.8 | 15.2 | 12.5 | 17.9 | 12.5 | 11.1 | 5.7 | 60 | 1.4 | Recessed | 5:1 | 1448 | 4320 |
| | | | 553.7 | 386.1 | 317.5 | 454.7 | 317.5 | 281.9 | 2.6 | 27 | 39.6 | | | | |
| AR20120702 | 20" x 12" x 7" | Solid/Textured Bottom | 20.0 | 11.7 | 7.5 | 16.9 | 9.6 | 6.1 | 3.8 | 40 | 0.6 | Recessed | 3:1 | 3720 | 6480 |
| | | | 508.0 | 297.2 | 190.5 | 429.3 | 243.8 | 154.9 | 1.7 | 18 | 17.0 | | | | |
| AR20120721 | 20" x 12" x 7" | Open/Textured Bottom | 20.0 | 11.7 | 7.5 | 16.9 | 9.6 | 6.1 | 3.8 | 40 | 0.6 | Recessed | 3:1 | 3720 | 6480 |
| | | | 508.0 | 297.2 | 190.5 | 429.3 | 243.8 | 154.9 | 1.7 | 18 | 17.0 | | | | |
| AR21151702 | 21" x 15" x 17" | Solid/Textured Bottom | 21.8 | 15.3 | 17.0 | 17.9 | 12.5 | 15.9 | 6.9 | 60 | 2.1 | Recessed | 5.4:1 | 600 | 3120 |
| | | | 553.7 | 388.6 | 431.8 | 454.7 | 317.5 | 403.9 | 3.1 | 27 | 59.5 | | | | |
| AR24201202 | 24" x 20" x 12" | Solid/Textured Bottom | 24.0 | 19.5 | 12.6 | 20.5 | 16.6 | 10.8 | 8.1 | 80 | 2.3 | Recessed | 5.6:1 | 1000 | 3840 |
| | | | 609.6 | 495.3 | 320.0 | 520.7 | 421.6 | 274.3 | 3.7 | 36 | 65.1 | | | | |
| AR25151302 | 25" x 15" x 13" | Solid/Textured Bottom | 24.5 | 15.0 | 13.2 | 21.0 | 12.2 | 11.8 | 7.4 | 45 | 1.7 | Recessed | 5.9:1 | 896 | 3224 |
| | | | 622.3 | 381.0 | 335.3 | 533.4 | 309.9 | 299.7 | 3.4 | 20 | 48.1 | | | | |
| AR27171202 | 27" x 17" x 12" | Solid/Textured Bottom | 27.0 | 16.9 | 12.5 | 23.5 | 13.8 | 10.9 | 8.2 | 100 | 2.3 | Recessed | 4.3:1 | 1072 | 3432 |
| | | | 685.8 | 429.3 | 317.5 | 596.9 | 350.5 | 276.9 | 3.7 | 45 | 65.1 | | | | |
| AR27171221 | 27" x 17" x 12" | Open/Textured Bottom | 27.0 | 16.9 | 12.5 | 23.5 | 13.8 | 10.9 | 8.2 | 100 | 2.3 | Recessed | 4.3:1 | 1072 | 3432 |
| | | | 685.8 | 429.3 | 317.5 | 596.9 | 350.5 | 276.9 | 3.7 | 45 | 65.1 | | | | |
| AS22131202 | 22" x 13" x 12" | Solid/Textured Bottom | 22.3 | 12.8 | 12.9 | 18.8 | 10.1 | 11.8 | 6.0 | 60 | 1.3 | Strapping | 4:1 | 1568 | 4702 |
| | | | 566.4 | 325.1 | 327.7 | 477.5 | 256.5 | 299.7 | 2.7 | 27 | 36.8 | | | | |
| AS22131221 | 22" x 13" x 12" | Open/Textured Bottom | 22.3 | 12.8 | 12.9 | 18.8 | 10.1 | 11.8 | 6.0 | 60 | 1.3 | Strapping | 4:1 | 1568 | 4702 |
| | | | 566.4 | 325.1 | 327.7 | 477.5 | 256.5 | 299.7 | 2.7 | 27 | 36.8 | | | | |
| AS28211502 | 28" x 21" x 15" | Solid/Textured Bottom | 28.0 | 20.8 | 15.4 | 25.0 | 18.0 | 14.0 | 12.6 | 100 | 3.6 | Strapping | 2.8:1 | 624 | 1496 |
| | | | 711.2 | 528.3 | 391.2 | 635.0 | 457.2 | 355.6 | 5.7 | 45 | 101.9 | | | | |
| AS34242012 | 34" x 24" x 20" | Solid/Smooth Bottom, Open Handholds | 34.0 | 24.0 | 19.6 | 29.9 | 19.5 | 18.1 | 19.0 | 100 | 6.1 | Strapping | 2.7:1 | 390 | 816 |
| | | | 863.6 | 609.6 | 497.8 | 759.5 | 495.3 | 459.7 | 8.6 | 45 | 172.7 | | | | |



AR24201202



AR25151302



AR27171202



AS28211502



AS34242012

Distributed by:
Custom Equipment Company
 866-333-0728
 sales@custommhs.com
 www.custommhs.com