

HOW TO SELECT THE RIGHT ROLLING LADDER FOR YOUR APPLICATION

Size Considerations

- Select Platform Height, also known as Top Step Height, based on operations being performed.
- Platform Height is where the user generally stands. Make sure you have minimum clearance of 6 to 7 feet from the ceiling or any object suspended from the ceiling to insure the user has room to stand safely.
- Maximum convenient working height is 5 feet to 6 feet above the platform height.
- For larger ladders, choose a wide ladder over a narrow one if space permits. For bulky loads, consider a stairway slope ladder and/or deeper top step.
- Consider limitations on ladder dimensions imposed by doorways, aisle width and corners the ladder needs to turn. For tight spaces, select a narrow or all directional ladder for maximum maneuverability.

Note: Load capacity (lbs.) is the combined weight of the user and materials.

Shipping:

- Ballymore's Patented bolt in top step allows ladders to be boxed
- Ballymore's ladder in a box program:
 - Lower freight cost
 - Eliminate freight damage
 - Provides ability to stock ladders



Climbing Position

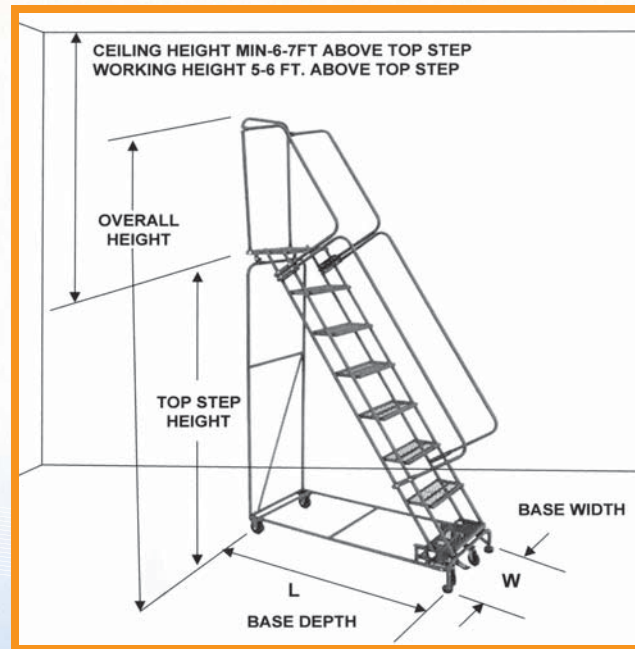
The typical incline of a rolling ladder is designed for the user to ascend and descend facing the steps. However, "Stairway Slope" or "Walk Down" ladders have a more moderate incline, approximately 50 degrees, enabling the user to descend facing forward which is safer and more stable while carrying heavier and bulky objects.

Material Type

Steel: For all around general purpose.
 Stainless: For corrosive environment as well as outdoor use.
 Aluminum: Like Stainless, they are corrosion resistant making them ideal for both indoor and outdoor use.

Locking Mechanisms

- **Weight Actuated Lock Step:** This Patented state of the art lock step automatically actuates when 70 lbs. of weight is applied to the stair section. Safest most durable lock step on the market today.
- **Standard Lock Step Ladders:** Ideal for applications over 5 steps. These ladders are raised into the rolling position when the lock step is actuated. Releasing the lock step drops the ladder into the climbing position with the feet firmly on the floor.
- **Spring-loaded Casters:** Ideal for shorter ladders 5 steps and below. On this style ladder, the wheels retract under the user's weight securing the ladder to the floor.



STANDARD ROLLING LADDERS WITH SPRING LOADED CASTERS

- Mounted on four spring loaded swivel casters that retract under user's weight
- Working heights up to 12'
- 7" deep steps with 10" deep top step on 1 - 4 step models shown with (*) or (**)
- 14" deep top step on 4 - 7 step FSH models
- Comes standard with expanded metal tread, optional treads available
- 1 - 4 step ladders(*) & (**) ship unassembled in a box, eligible for UPS;
- 4 - 7 step FSH models ship unassembled
- Specify set-up (SU) if required***
- 450 lb. capacity
- Gray powder coat finish
- Built to OSHA and ANSI standards
- CAL OSHA available



STEPS INCLUDING TOP STEP	HEIGHT INCHES		16" WIDE STEP			24" WIDE STEP		
	TOP STEP	OVER ALL	MODEL #	BASE W" x L"	WGT Lbs.	MODEL #	BASE W" x L"	WGT Lbs.
NO HANDRAILS								
1 STEP	12	12	118*	18 x 16	18	126*	26 x 16	20
2 STEP	19	19	218*	20 x 19	22	226*	30 x 19	28
3 STEP	28.5	28.5	318*	20 x 25	31	326*	30 x 25	36
4 STEP	38	38	418*	20 x 31	42	426*	30 x 31	51
WITH HANDRAILS								
2 STEP	19	49	H218**	20 x 19	36	H226**	30 x 19	42
3 STEP	28.5	58.5	H318**	20 x 25	45	H326**	30 x 25	50
4 STEP	38	68	H418**	20 x 31	56	H426**	30 x 31	65
4 STEP	40	73	FSH418	20 x 35	68	FSH426	30 x 35	80
5 STEP	50	83	FSH518	20 x 42	75	FSH526	30 x 42	87
6 STEP	60	93	FSH618	24 x 49	83	FSH626	30 x 49	98
7 STEP	70	103	FSH718	24 x 56	89	FSH726	30 x 56	108

*Eligible for UPS

**Handrails may ship in separate box

*** May result in higher freight costs

LOCK-N-STOCK AND NEW MODIFIED LOCK-N-STOCK

Try Ballymore's Lock-N-Stock and New Modified Lock-N-Stock. Both Ladders have a 58° slope and 7" Deep Steps. Our Standard Lock-N-Stock has 7" Deep Top Step where as our Modified Lock-N-Stock has a 10" Deep Top Step. Our Standard Lock-N-Stock has 22" high handles where as our Modified Lock-N-Stock has 30" handrails along with a rear guard rail.

MODEL #	STEPS INCLUDING TOP STEP	TOP STEP HEIGHT	WGT Lbs.	OPEN WIDTH AND LENGTH	FOLDED DIMENSIONS	SHIPS UPS (Oversize)
LS2247	2	19	36	24 x 17	10 x 24 x 41	YES
LS3247	3	28.5	44	24 x 23	10 x 24 x 52	YES
LS4247	4	38	51	24 x 30	10 x 24 x 65	YES*
LS32410	3	28.5	46	24 x 28	14 x 24 x 62	YES*
LS42410	4	38	52	24 x 35	14 x 24 x 72	YES*

*Oversize 90lbs



Weight Actuated Lockstep Ladder

Patent No.: US 7,828,115 B2



Lockstep Ladder



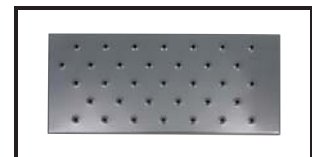
Spring Loaded Casters

TREAD SELECTION GUIDE

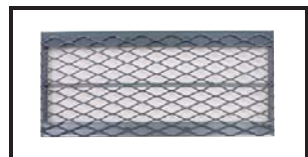
Abrasive Mat Tread (R):
Great in a clean retail environment.



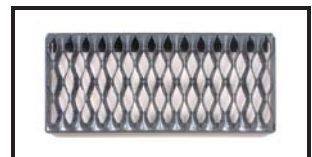
Perforated Tread (P):
Provides excellent slip resistance. This tread design is used extensively in retail and storeroom applications.



Expanded Metal Tread (X):
This aggressive tread is ideal for the warehouse or retail floor. This design is self-cleaning allowing foot debris to fall through the tread.



Serrated Tread (G):
The most aggressive. This tread design is ideal for the shop floor or any industrial application where maximum slip resistance is required.



- Welded construction
- No hinge to break
- Heavy duty rated for 350 pounds
- 16" wide steps
- Easy to maneuver in the open or closed positions
- Locks in the folded or climbing positions
- Approximately 10" deep when folded for easy storage
- Built to ANSI standards



M-2000 SERIES ROLLING SAFETY LADDERS

- 450 lbs. capacity
- Easy to use footpedal activated lockstep
- High quality casters with bearing and dust cover
- 14" deep top step
- Ladders ship knocked-down for freight savings
- Fully assembled ladders available - specify (SU) set-up
- Expanded metal tread standard or specify alternate tread
- Manufactured with rigid 1" OD tubing
- 30" high handrails
- 21" and 28" deep top step available (see below)
- Available with Rear Guardrail removed for easy walk through
- Gray powder coat finish
- Built to OSHA and ANSI standards
- CAL OSHA available

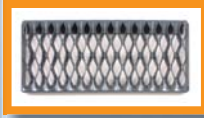
EXPANDED METAL
STANDARD OR
SPECIFY ALTERNATE
TREAD WHEN
ORDERING



Perforated Tread (P)



Expanded Metal Tread (X)



Heavy Duty Serrated Grating (G)



Abrasive Mat Tread (R)



Heavy Duty Easy Operating Lockstep

STEPS INCLUDING TOP STEP	HEIGHT INCHES		MODEL #	BASE W" x L"	WGT Lbs.
	TOP STEP	OVER ALL			
16" WIDE STEP WITH 24" WIDE BASE					
5 STEP	50	83	052414	24 x 43	91
6 STEP	60	93	062414	24 x 49	100
7 STEP	70	103	072414	24 x 55	109
8 STEP	80	113	082414	24 x 61	127
24" WIDE STEP WITH 32" - 40" WIDE BASE					
5 STEP	50	83	053214	32 x 43	110
6 STEP	60	93	063214	32 x 49	122
7 STEP	70	103	073214	32 x 55	143
8 STEP	80	113	083214	32 x 61	160
9 STEP	90	123	093214	32 x 68	175
10 STEP	100	133	103214	32 x 74	193
11 STEP	110	143	113214	32 x 80	205
12 STEP	120	153	123214	32 x 87	220
13 STEP*	130	175	134014	40 x 94	250
14 STEP*	140	185	144014	40 x 100	280
15 STEP*	150	195	154014	40 x 106	310

*Must be skidded. See price sheet for skidding cost.

M-2000 SERIES DEEP TOP STEP LADDERS

- All features of the standard M-2000 line with a Deep Top Step to provide a larger and more comfortable work space
- No rear guard rail available for easy walk through
- Side exit available on 28" deep top step models

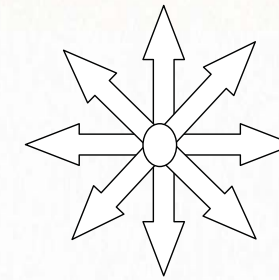
STEPS INCLUDING TOP STEP	HEIGHT INCHES		21" DEEP TOP STEP			28" DEEP TOP STEP		
	TOP STEP	OVER ALL	MODEL #	BASE W" x L"	WGT Lbs.	MODEL #	BASE W" x L"	WGT Lbs.
16" WIDE STEP WITH 24" WIDE BASE								
5 STEP	50	83	052421	24 x 50	102	052428	24 x 57	113
6 STEP	60	93	062421	24 x 56	111	062428	24 x 63	122
7 STEP	70	103	072421	24 x 62	120	072428	24 x 69	131
8 STEP	80	113	082421	24 x 68	138	082428	24 x 75	149
24" WIDE STEP WITH 32" - 40" WIDE BASE								
5 STEP	50	83	053221	32 x 50	121	053228	32 x 57	132
6 STEP	60	93	063221	32 x 56	133	063228	32 x 63	144
7 STEP	70	103	073221	32 x 62	154	073228	32 x 69	165
8 STEP	80	113	083221	32 x 68	171	083228	32 x 75	182
9 STEP	90	123	093221	32 x 75	186	093228	32 x 82	197
10 STEP	100	133	103221	32 x 81	204	103228	32 x 88	215
11 STEP	110	143	113221	32 x 87	216	113228	32 x 94	227
12 STEP	120	153	123221	32 x 94	231	123228	32 x 101	242
13 STEP*	130	175	134021	40 x 101	261	134028	40 x 108	272
14 STEP*	140	185	144021	40 x 107	291	144028	40 x 115	302
15 STEP*	150	195	154021	40 x 113	321	154028	40 x 120	332



ALL DIRECTION LADDERS MOVES Laterally TO FIT IN TIGHT CORNERS AND CLOSE TO SHELVES



Rolls on 4 swivel casters allowing ladders to move in **ALL DIRECTIONS**. Rigid casters on rear provide easy transition between floor types.



- Turns in its own radius
- Easy to use footpedal activated lockstep
- 14" deep top step
- 450 lbs. capacity
- Gray powder coat finish
- Built to OSHA and ANSI standards
- CAL OSHA available

STEPS INCLUDING TOP STEP	HEIGHT INCHES		MODEL #	BASE W" x L"	WGT Lbs.
	TOP STEP	OVER ALL			
16" WIDE STEP					
6 STEP	60	93	PIP-6	24 x 49	110
7 STEP	70	103	PIP-7	24 x 55	125
8 STEP	80	113	PIP-8	24 x 61	140
24" WIDE STEP					
6 STEP	60	93	PIP-6-32	32 x 49	133
7 STEP	70	103	PIP-7-32	32 x 55	154
8 STEP	80	113	PIP-8-32	32 x 61	171
9 STEP	90	123	PIP-9	32 x 68	186
10 STEP	100	133	PIP-10	32 x 74	204
11 STEP	110	143	PIP-11	32 x 80	216
12 STEP	120	153	PIP-12	32 x 87	231

Ships KD to reduce freight costs EASY ASSEMBLY
Set up available - Specify SU



Built to OSHA and ANSI

TREAD TYPES AVAILABLE:
(X) Expanded Metal - Standard • (P) Perforated • (R) Abrasive Mat • (G) Heavy Duty Serrated Grating
PLEASE SPECIFY WHEN ORDERING

BALLYMORE INTRODUCES "THE NAVIGATOR"

Specifically designed to provide easy access to narrow aisles and tight spaces. A safer option to "A" frame ladders, the Navigator includes handrails and a more gradual climbing slope. The weight actuated lockstep gives the ladder a very secure feel when climbing. Can reduce accidents and worker's compensation claims.

- Available 7-10 Steps
- Standard or folding side rails
- All Direction design
- 450 lbs. capacity
- Abrasive mat tread, other treads available
- Patented weight activated lockstep is standard
- 14" Deep Top Step
- Gray powder coat finish
- Ships unassembled and boxed, available assembled
- Meets OSHA and ANSI
- CAL OSHA available

THE NAVIGATOR WITH STANDARD FIXED RAILS					
STEPS INCLUDING TOP STEP	TOP STEP HEIGHT	OVERALL HEIGHT	MODEL #	BASE W x L	WEIGHT (Lbs.)
7	70	108	NAV-7RS	24 x 51	160
8	80	113	NAV-8RS	24 x 57	176
9	90	123	NAV-9RS	24 x 63	192
10	100	133	NAV-10RS	24 x 69	210
THE NAVIGATOR WITH FOLDING SIDE RAILS					
7	70	108	NAV-7RF	24 x 51	160
8	80	113	NAV-8RF	24 x 57	176
9	90	123	NAV-9RF	24 x 63	192
10	100	133	NAV-10RF	24 x 69	210



50° SLOPE WALK DOWN LADDER



- 50° stairway slope, allows forward facing descent
- Easy to use footpedal activated lockstep
- 14" deep top step standard
- 21" and 28" deep top steps available
- 450 lb. capacity
- Perforated tread standard, or specify alternate tread type
- Ships unassembled for freight cost savings - for set-up specify SU
- Gray powder coat finish
- Available with Rear Guardrail removed for easy walk through
- Built to OSHA and ANSI standards
- CAL OSHA available

TREAD TYPES AVAILABLE:

- (X) Expanded Metal
- (P) Perforated - Standard
- (R) Abrasive Mat
- (G) Heavy Duty Serrated Grating

STEPS INCLUDING TOP STEP	HEIGHT INCHES		MODEL #	BASE W" x L"	WGT Lbs.
	TOP STEP	OVER ALL			
16" Wide Step					
5 STEP	50	83	SW524	24 x 51	96
6 STEP	60	93	SW624	24 x 59	109
7 STEP	70	103	SW724	24 x 68	122
8 STEP	80	113	SW824	24 x 76	135
24" Wide Step					
5 STEP	50	83	SW532	32 x 51	115
6 STEP	60	93	SW632	32 x 59	120
7 STEP	70	103	SW732	32 x 68	139
8 STEP	80	113	SW832	32 x 76	165
9 STEP	90	123	SW932	32 x 84	180
10 STEP	100	133	SW1032	32 x 98	200
11 STEP	110	143	SW1132	32 x 101	210
12 STEP	120	153	SW1232	32 x 109	230

Available with **ALL DIRECTIONAL** option
(Recommended on all 10, 11 and 12 step models)

HEAVY DUTY STAIRWAY SLOPE LADDERS



- **HEAVY DUTY - RUGGED 600 lbs. capacity**
- **50° stairway slope (for easy forward ascent or descent)**
- Top step is 14" deep for additional comfort
- 10" intermediate steps
- 21" and 28" deep top steps available
- Easy operating lockstep secures ladder to the floor
- Gray powder coat finish
- All direction option available
- Exceeds OSHA and ANSI standards
- Available with Guardrail removed for easy walk through
- CAL OSHA available

TREAD TYPES AVAILABLE:

- (X) Expanded Metal
- (P) Perforated
- (R) Abrasive Mat
- (G) Heavy Duty Serrated Grating

PLEASE SPECIFY WHEN ORDERING

STEPS INCLUDING TOP STEP	HEIGHT INCHES		MODEL #	BASE W" x L"	WGT Lbs.
	TOP STEP	OVER ALL			
5 STEP	50	83	HDS-5	32 x 50	132
6 STEP	60	93	HDS-6	32 x 58	152
7 STEP	70	103	HDS-7	32 x 66	178
8 STEP	80	113	HDS-8	32 x 74	204
9 STEP	90	123	HDS-9	32 x 82	227
10 STEP	100	133	HDS-10	32 x 90	245
11 STEP	110	143	HDS-11	32 x 98	278
12 STEP	120	153	HDS-12	32 x 106	297



Pedal Activated Lockstep

LADDER REPLACEMENT PARTS & OPTIONS

Optional Replaceable Skid Plate for rough surfaces



Part #	Description	# Per Set
*PR-2	2" Replacement Casters Sets	4
*PR-3	3" Replacement Casters Sets	4
PS	Replacement Springs	4
PTHDS	Replacement Rubber Tips	4
SBR-4	4" Replacement Casters Sets	4
FW-2	10" Rubber Wheels	2

*Must specify # of steps and width
(Set includes casters, springs, rubber tips and hardware)

Rear Exit or Side Exit Available

- 28" deep top step required for Side Exit
- Please confirm freight classification and packing charge
- Not available on ladders with spring loaded casters
- See price list for cost

Ladder Shelves and Trays

- Hanging Shelf
- Hanging Tray



Built to OSHA and ANSI

- Combines the benefits of a rolling safety ladder and a stock-picking cart
- 16" or 24" wide steps, choice of 14" deep top step or 21" deep top step
- Sturdy
 - 2 shelves on 6 - 7 step models
 - 3 shelves on 8 - 12 step models
- Combined 600 lbs. capacity
 - Maximum 450 lbs. for ladder
 - Maximum 300 lbs. for storage shelves
- Gray powder coat finish
- CAL OSHA available
- Boxed to reduce freight costs and risk of damage
- Built to OSHA and ANSI standards

STEPS INCLUDING TOP STEP	HEIGHT INCHES		MODEL #	BASE W" x L"	WGT Lbs.
	TOP STEP	OVER ALL			
16" WIDE TREAD 14" Deep Top Step					
6 STEP	60	93	SPL-6-14N	24 x 49	80
7 STEP	70	103	SPL-7-14N	24 x 55	89
8 STEP	80	113	SPL-8-14N	24 x 61	120
16" WIDE TREAD 21" Deep Top Step					
6 STEP	60	93	SPL-6-N	24 x 56	91
7 STEP	70	103	SPL-7-N	24 x 62	100
8 STEP	80	113	SPL-8-N	24 x 68	131
24" WIDE TREAD 14" Deep Top Step					
6 STEP	60	93	SPL-6-14	32 x 49	150
7 STEP	70	103	SPL-7-14	32 x 55	166
8 STEP	80	113	SPL-8-14	32 x 61	205
9 STEP	90	123	SPL-9-14	32 x 68	215
10 STEP	100	133	SPL-10-14	32 x 74	225
11 STEP	110	143	SPL-11-14	32 x 80	235
12 STEP	120	153	SPL-12-14	32 x 87	250
24" WIDE TREAD 21" Deep Top Step					
6 STEP	60	93	SPL-6	32 x 56	160
7 STEP	70	103	SPL-7	32 x 62	176
8 STEP	80	113	SPL-8	32 x 68	215
9 STEP	90	123	SPL-9	32 x 75	225
10 STEP*	100	133	SPL-10	32 x 81	235
11 STEP*	110	143	SPL-11	32 x 87	245
12 STEP*	120	153	SPL-12	32 x 94	260

THE MONSTER LINE ROLLING SAFETY LADDER

EXTRA HEAVY DUTY 600 Lbs. Capacity!

Standard Features:

- 21" deep top step - standard
- Base frame and rear vertical are rugged 2" x 1" rectangular tubing
- 59 degree slope
- Weight Actuated Lockstep
- 24" wide steps - available in 3 step tread types
- High quality non-marking wheels with roller bearings and dust cover
- Rear corner bumpers - standard
- All-Directional option available
- Gray powder coat finish
- Available with Rear Guardrail removed for easy walk through
- Exceeds OSHA and ANSI standards
- CAL OSHA available
- Certified in Ontario, Canada

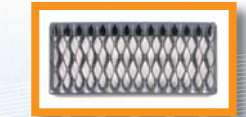
EXPANDED METAL STANDARD OR SPECIFY ALTERNATE TREAD WHEN ORDERING



Perforated Tread (P)



Expanded Metal Tread (X)



Heavy Duty Serrated Grating (G)



VISIT OUR **NEW** WEBSITE AT BALLYMORE.com

STOCK PICKING LADDERS