

## ESD-Safe Trays offer long life in plants, workstations and tool rooms.



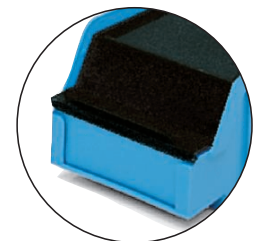
### ESD-Safe Part Bins

Container Model	Outside Dimensions (in)			Inside Dimensions (in)		Hopper Height (in)	Weight (lb)	Carton Quantity	Flat Label ID Area (in)		Solid Covers
	L	W	H	L	W				W	H	
PB10-FXL	3.5	4.0	2.0	3.0	3.4	1.1	0.2	24	3.0	0.8	CPB10*
PB10x-XL (with divider)	3.5	4.0	2.0	3.0	3.4	1.1	0.3	24	3.0	0.8	CPB10*
PB20-FXL	7.0	4.0	2.9	6.0	3.4	1.6	0.3	24	3.0	1.0	CPB20*
PB20x-XL (with divider)	7.0	4.0	2.9	6.0	3.4	1.6	0.3	24	3.0	1.0	CPB20*
PB22-FXL	6.6	8.8	2.9	6.0	8.1	1.6	0.6	12	2.5	7.5	CPB22*
PB22x-XL (with divider)	6.6	8.8	2.9	6.0	8.1	1.6	0.6	12	2.5	7.5	CPB22*
PB30-FXL	9.5	5.8	5.0	8.4	5.0	2.6	0.7	12	3.0	1.0	CPB30*
PB30x-XL (with divider)	9.5	5.8	5.0	8.4	5.0	2.6	0.8	12	3.0	1.0	CPB30*
PB31-FXL	9.3	8.8	5.0	8.4	8.0	2.5	0.9	8	3.0	1.0	N/A
PB31x-XL (with divider)	9.3	8.8	5.0	8.4	8.0	2.5	1.1	8	3.0	1.0	N/A
PB40-FXL	12.8	8.1	6.0	11.8	7.1	3.1	1.5	12	3.0	1.0	N/A
PB41-FXL	12.8	11.4	6.0	11.8	10.5	3.1	1.6	12	3.0	1.0	N/A
PB41x-XL (with divider)	12.8	11.4	6.0	11.8	10.5	3.1	1.9	12	3.0	1.0	N/A
PB50-FXL	18.5	11.6	7.1	17.1	10.8	3.8	2.4	6	3.0	1.0	N/A

Available Stocked Material: ● XL Conductive

\* Available on a make-to-order basis.

Note: Other ESD-safe materials available on a make-to-order basis. Please call for information.



CPB20-XL

## ESD-SAFE SHELF BINS

- Designed to work with 12" and 18" shelving to enhance inventory control and part organization
- Bins nest when empty to save space
- Built-in hang lock allows bin to tilt out for full part accessibility. Hopper front optimizes part accessibility
- Large flat area for adhesive identification and bar code scanning (See pg. 39)
- Each bin can accommodate up to 3 dividers
- Optional conductive dividers slide in easily and lock securely to eliminate part migration



Distributed by: Custom Equipment Company  
 866-333-0728  
 sales@custommhs.com  
 www.custommhs.com