

Low-Profile  
Semi-Automatic  
Stretch Wrap Machine



## HANDLE-IT® SA Series

Model 600  
Model 800  
Model 800XHT  
Model 850PS  
Model 850PSXHT  
Model 1100AC

### **Model 1200UL**

- Eliminates need for long & steep loading ramps
- Saves vital floor space
- Reduces forklift impact abuse

Part Number: SWM-SA-1200UL

### Full Set of Functions & Options

#### Power Pre-Stretch Carriage

#### Patented Ultra Low Frame Less than 3/4" from the floor!

### Technical Specifications

|                           |                          |
|---------------------------|--------------------------|
| Max Wrap Height           | 86"                      |
| Turntable Diameter        | 66"                      |
| Max Pallet Size           | 40" x 48" (66" Diagonal) |
| Turntable Height          | less than 3/4" (.71")    |
| Weight Capacity           | 3,300 lbs                |
| Pre-Stretch               | 250% Powered             |
| Power Supply              | 110V, 10 Amp             |
| * Total Machine Footprint | 119" L x 82" W x 95" H   |
| Machine Weight            | 1200 lbs                 |
| Turntable Speed           | 12 RPM                   |

\* Footprint includes 3 sided ramp

## Handle-It® Model 1200UL

The Handle-It® Model 1200UL offers top-of-the-line functions and features at a great price. It is ideal for those who are looking for an efficient machine capable of handling high volumes of pallets per day. This model is especially suited where space is a premium.

Standard features on the 1200UL include a patented ultra low frame, 250% powered pre-stretch, user-friendly PLC control panel, braked turntable, and many other elements cleverly designed to make this unit a must-have in any facility looking to improve and streamline their packaging operations.

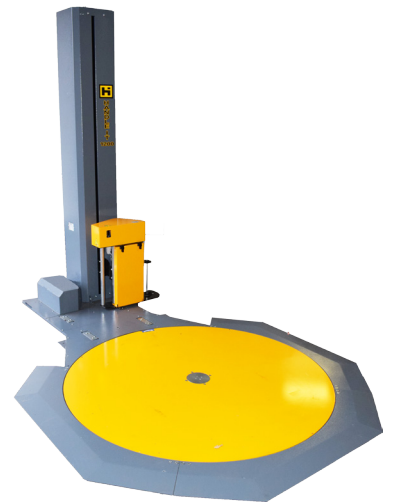
# HANDLE-IT®

## Semi-Automatic Stretch Wrapper

### Product Specifications

- User-friendly integrated PLC control board
- Frequency controller for carriage and/or turntable speed adjustment
- Photocell for pallet height detection or custom set height
- Safety stop at the base of the carriage
- Stop at home position
- Easily adjustable parameters, rotation counts, speeds, and tensions.
- Quick selection of 6 main parameters or saved programs
- USB port to upload software and download settings, reports, and statistics
- 6 working cycles: ascent/descent, topsheet, only ascent, descent, layers, and stack
- 3 working modes: semimanual, semiautomatic, or fixed height
- Storage of 32 end user programs
- On-board diagnostics
- Wrapped pallet counter
- 59" diameter turntable loading surface
- Up to 12 RPM turntable speed
- 3,300 lb maximum load weight
- 48" x 80" (93" diagonal) max. pallet size \*ensure area is clear for over-swing\*
- Up to 250% film pre-stretch with electronic power pre-stretch motor
- 3 year warranty

## Model 1200UL

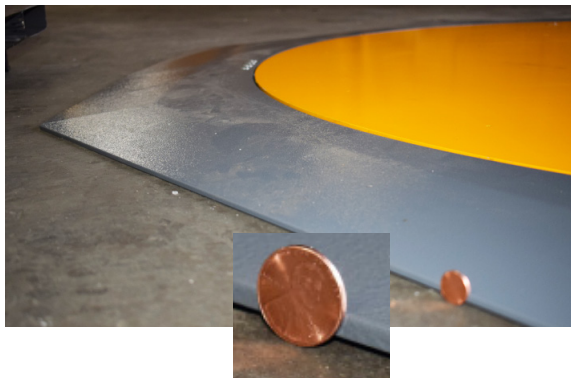


Patented Ultra Low Frame

Belt driven pre-stretch carriage for added reliability  
 Rack and pinion carriage system vs. traditional chain driven to increase durability

### Patented Ultra Low Frame

- Easier and safer to load with any equipment
- Eliminates space eating 5' loading ramps
- Easily transition load from three sides



### Power Pre-Stretch Carriage



### Available Options

- Auto Film Cut
- Adjustable Power Pre-Stretch up to 600%
- Roping System
- 118" Max Wrap Height
- Remote Control
- Top Press
- Photocell for Dark Loads
- Film usage diagnostics

Distributed by:  
 Custom Equipment Company  
 866-333-0728  
 sales@custommhs.com  
 www.custommhs.com