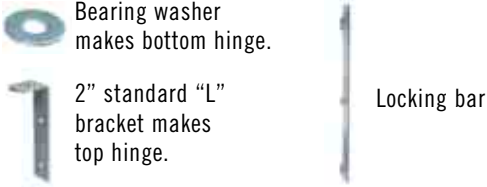


# Single Folding Gate Installation Instructions

## About Illinois Engineered Products Heavy-Duty Folding Gates

- For installation on concrete floors.
- Bottom of gate hinges on bearing washer and pin set into floor hole. Do not remove bottom floor pin.
- Top of gate hinges on “L” bracket bolted to wall or door frame.
- To install gates inside overhead doors, bollards or to clear obstructions, 6” or 9” extension brackets are required.
- Either side can be toward the outside of building.

**Parts provided with each gate:**



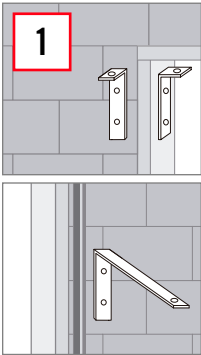
Bearing washer makes bottom hinge.

2” standard “L” bracket makes top hinge.

Locking bar

**Tools needed:** Marking pencil, 3/4” masonry drill bit, 1/4” masonry or wood drill bit, drill, ratchet or wrench. Helpful tools include carpenter’s level and ladder.

**Parts needed:** 5/16” x 2” long lag bolts. May also require lead anchors. 1/2” shaft diameter padlock.



**Step 1:** Before installing decide on gate placement. “L” brackets that form top hinge allows gate placement in the recess of door frame. Installation can also be made outside or inside of wall next to door or opening frame.

Extension brackets (order separately) clear overhead door tracks, bollards or obstructions. 6” brackets provide 4-3/4” clearance, 9” brackets provide 7-1/4” clearance.

**CAUTION:**

- ⚠ Keep fingers out of web pinch points.
- ⚠ Do not set gate on its wheel, gate will run away and fall.



**Step 2:** Have a helper extend the gate and stand it upright where it will be mounted.  
**CAUTION:** Check to confirm gate will swing away from opening when not in use. This will provide a clear opening for normal traffic.

- Drill 3/4” diameter x 3” deep hole, 1-1/4” from wall into floor for gate pin to set into.
- For 6” extension bracket drill 6” O.C. from wall.
- For 9” extension bracket drill 9” O.C. from wall.

Place a bearing washer over floor hole and set bottom gate pin into floor mount hole.



**Step 3:** Extend gate and hang “L” bracket on top of gate to verify where it will be mounted. To release tension you may lift the wheel 1/2”-3/4” off the floor. Mark and drill pilot holes into door frame or wall. It may be easier to drill pilot holes if you remove the gate from its floor mount. Place bearing washer and bottom gate pin back into floor mount. Slip “L” bracket over top of gate and secure with 5/16” x 2” lag bolts.



**Step 4:** Extend and retract gate to its stops to work out stiffness. Always raise the drop pin to keep it from dragging across the floor. Now you are done mounting the hinged side of the gate.

**Step 5:** Fully extend gate across opening, align padlock holes and position locking bar on door frame or wall. Mark and drill pilot holes. Secure with 5/16” x 2” lag bolts.



**Step 6:** With gate fully extended across opening mark the floor center drop pin hole onto concrete floor. Drill a 3/4” diameter x 3” deep hole. Lower drop pin (Note: some larger gates have an additional pin in the center of each web, mark and drill these last.) Secure gate to locking bar with 1/2” shaft diameter padlock.

Open gate slowly at first to avoid warping.