

High-Tech / Quick-Ship



New Hempstead Gr. 2
NH369 Navy (QS)



U R Grounded Gr. C
Navy (QS, ESD)



Vacuum Formed Formfit II Vinyl
Slate Blue (CR)



Microcon Gr. B
Blue (QS, ESD, CR)



New Hempstead Gr. 2
NH333 Black (QS)



U R Grounded Gr. C
Ebony (QS, ESD)



Vacuum Formed Formfit II Vinyl
Black (CR)



Microcon Gr. B
Black (QS, ESD, CR)



Patriot Plus 2.0 Gr. 2
P28605 Charcoal (QS, CR)



Patriot Plus 2.0 Gr. 2
P28542 Royal (QS, CR)



Patriot Plus 2.0 Gr. 2
P28540 Black (QS, CR)



Conductive Vinyl Gr. A
Black (ESD)

**Moccasin 2.0
Grade 2 Vinyl (CR)**



MOC26 MOC-Bramble



MOC35 MOC-Lasso



MOC-Milieu
MOC10



MOC-Shale
MOC32



MOC24 MOC-Buck



MOC17 MOC-Blue



MOC37 MOC-Carob



MOC-Rustic Red



MOC-Saddle



MOC-Classic



MOC-Onyx

**Patriot Plus 2.0
Grade 2 Vinyl (CR)**



P28532 Bordeaux



P2864 Concrete



P28628 Sea



P28539 Gunmetal



P28517 Mocha

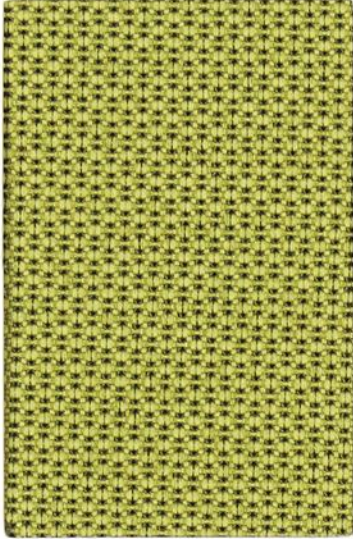


P28572 Blue Ridge



P28605 Charcoal

Bryant Park
Grade 2 Fabric



6561 Crocodile



6551 Marigold



6555 Pumice



6560 Gunmetal



6553 Nile

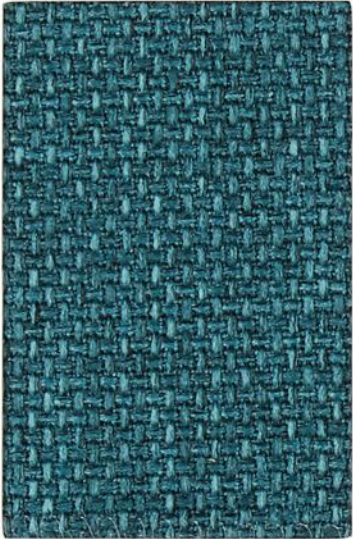


6563 Night Shadow



6558 Saxon Blue

Tribeca
Grade 2 Fabric



63753 Teal



63747 Burnt Orange



63745 Silver



63757 Shadow



63750 Cassis

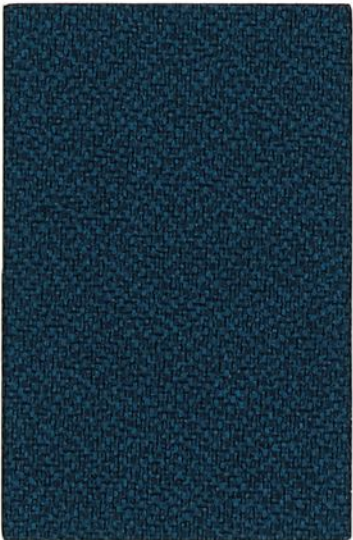


63746 Slate



63754 Regatta

New Hempstead
Grade 2 Fabric



NH359 Azure



NH406 Fire



NH420 Jodhpurs



NH395 Grey



NH389 Red Red Wine

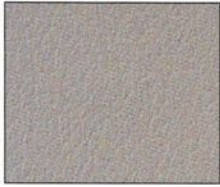


NH422 Napa



NH509 Galaxy

Grade 3 – Phoenix* Vinyl Upholsteries



PH65 Pearl



PH64 Nearly Black



PH62 Claret



PH63 Navy

*See specification page.

Colors for GG Series Chairs



Navy Blue



Black

Please note: Actual colors may differ from those shown.

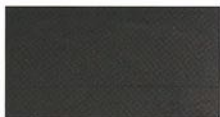
Standard Metal Part Powder Coat Finish*



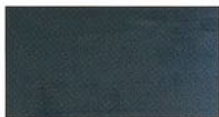
06 Black

*Chrome available for additional cost.

Shell Colors for KX Series Chairs



Nordic Black



Pacific Blue

Please note: Actual colors of upholstery may differ from those shown here. Swatches are available upon request.

Performance Attributes

Pattern	Enhanced Soil/Stain Protection	Fluid-Barrier Protection	Extreme Durability $\geq 100,000$ dr	Antimicrobial Protection	Bleach-Solution Cleanable	HHI Compliant	No Flame Retardant Additive (AB2998 Compliant)	Reduced Environmental Impact
<i>Artisan</i>	•		•				•	GREENGUARD Gold
<i>Bryant Park</i>	•		•				•	GREENGUARD Gold
<i>Clean Slate</i>	•	•	•	please inquire	•		•	GREENGUARD
<i>Etch</i>	•	•	•		•	•	•	GREENGUARD
<i>Kinetic</i>	•	•		•	•		•	GREENGUARD Gold
<i>Level</i>	•	•	•	•	•			GREENGUARD
<i>Moccasin</i>	•	•	•		•		•	GREENGUARD
<i>New Hempstead</i>	•		•				•	GREENGUARD Gold
<i>Nishiki</i>	•	•	•		•			GREENGUARD
<i>Patriot Plus 2.0</i>	•	•	•		•		•	GREENGUARD
<i>Recharge with Celliant®</i>	•		•		•		•	GREENGUARD Gold
<i>Silicone-Avail</i>	•	•	•		•	•	•	GREENGUARD Gold
<i>Tribeca</i>	•		•				•	GREENGUARD Gold

Specifications

Pattern	Content	Abrasion Resistance	Protective Finish	AB2998 Compliant	Cleaning Code
Artisan	100% Polyester	100,000 double rubs	Enhanced Soil and Stain Protection	•	W-S
Bryant Park	54% Post-Consumer Recycled Polyester, 46% Polyester	100,000 double rubs	Enhanced Soil and Stain Protection	•	W
Clean Slate 2.0	Vinyl Surface with Polyester Backing	100,000 double rubs	Advanced Soil and Stain Resistant Top Coat + Ink Resistance	•	W-S
Conductive Vinyl	Vinyl Coated Fabric		Dirt/Stain Resistant	•	
Etch	Polyurethane made with Polycarbonate and Polyether Resins	100,000 double rubs	Advanced Soil and Stain Resistant Top Coat + Ink Resistance	•	W
Kinetic	100% Polyester	63,000 double rubs	Crypton® Non-PFOA Soil & Stain Protection	•	W
Level	Vinyl Surface with Polyester Backing	1,000,000 double rubs	Advanced Soil and Stain Resistant Top Coat		W-S
Microcon Vinyl	Static-dissipative Surface with Polyester Backing	100,000 double rubs		•	W*
Moccasin 2.0	Vinyl Surface with Polyester Backing	100,000 double rubs	Soil and Stain Resistant Top Coat	•	W-S
New Hempstead	100% Polyester	750,000 double rubs	Non-PFOA Stain Resistant	•	W-S
Nishiki 2.0	Vinyl Surface with Polyester Knit Backing	250,000 double rubs	Advanced Soil and Stain Resistant Top Coat	•	W-S
Patriot Plus 2.0	Vinyl Surface with Polyester/Cotton Backing	100,000 Double rubs	Advanced Soil and Stain Resistant Top Coat	•	W-S
Phoenix	Contract Vinyl	250,000 double rubs	Enhanced Soil/Stain Protection		W-S
Recharge with Celliant®	58% Polyester, 42% Celliant® Polyester	100,000 double rubs	Non-PFOA Stain Resistant	•	W-S
Silicone-Avail	100% Silicone	200,000 double rubs	Enhanced ink resistance, fade resistance	•	W-S
Tribeca	100% Polyester	100,000 double rubs	Enhanced Soil and Stain Protection	•	S
U R Grounded	97.5% Nylon, 2.5% Conductrol™	100,000 double rubs	Enhanced Soil and Stain Protection	•	S
Vacuum Formed Formfit II	PVC Over Stretch Nylon Substrate	200,000 double rubs	Advanced BeautyGard®		S

Conductrol™ is a trademark of Sterling Fibers, Inc.

Nytek® is a registered trademark of Majilite Corporation, Dracul, MA 01826

Beautygard® is a registered trademark of Uniroyal Engineered Products.

*Clean with a solution of mild liquid soap and water, then wipe with a lint-free cloth. The use of any product containing silicone, alcohol, or solvents is not recommended, as it will adversely affect the ESD properties of the materials.

Flammability:

All patterns meet or exceed the flammability requirements of California Technical Bulletin 117-2013, Sec.1. Some patterns have been tested for other flammability specifications. These patterns may contribute to compliance when used in conjunction with other suitable components.

Cleaning Codes:

S: Clean with mild, water-free solvent-based cleaners only. Do not use water. We recommend using a professional cleaning service.

W: Clean with water-based foam or water-based cleaner only. Do not use solvents. We recommend using a professional cleaning service.

W-S: For water-based stains use water-based cleaners. For oil-based stains use solvent-based cleaners. We recommend using a professional cleaning service.

Memo Samples: Please contact Biofit at 800.597.0246 or biofit@biofit.com.

Stinson®

C.F. Stinson, LLC
2849 Product Drive
Rochester Hills, MI 48309



**Dedicated to Design.
Committed to Quality.**