

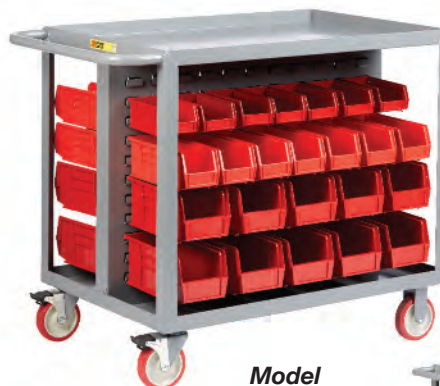


Bin Cart

1200 lbs. Capacity

- 12 gauge shelves
- 1-1/2" retaining lips
- Double-sided center welded louvered panels
- Overall height: 34"
- Two rigid and two swivel casters with total lock brakes
- 5" non-marking polyurethane wheels
- Powder coated gray finish
- All-welded construction
- Bins not included

Size	Model No.	Wt.
24 x 36	BC-2436-TL	71



Model
BC-2436-TL



Bin Cart with Pegboard Tool Storage

- Dual-sided bin cart
- 16 gauge steel pegboard on handle end
- Double-sided louvered panel for bins
- 12 gauge steel shelves with 1-1/2" retaining lip
- Overall height: 34"
- Two rigid and two swivel casters
- 5" non-marking polyurethane wheels with total lock brakes
- All-welded construction
- Ships fully assembled, ready for immediate use
- Bins not included

Size	Model No.	Wt.
24 x 36	BC-2436-TL-PB	79



Model
BC-2436-TL-PB

Sloped Shelf Bin Cart

2400 lbs. Capacity

- Dual-sided bin transport cart
- 14 gauge steel shelves
- 1-1/2" retaining lips
- 15° sloped shelves
- Shelves are 35-1/2"W and accommodate bins up to 11-7/8"D x 8"H
- Shelf clearance: 8-1/4"
- Twelve shelves; six on each side
- Two rigid and two swivel casters
- 6" non-marking polyurethane wheels
- All-welded construction
- Bins not included

Size	Model No.	Wt.
30 x 36	6BC-3036-6PY	328



Model
6BC-3036-6PY





Model
IF-2436-5PYTL
Double Sided Frame

Heavy-Duty Mobile Work Center

1200 lbs. Capacity

- 60" high uprights
- Adjustable slots on 2" centers
- All accessories and shelves purchased separately

Double Sided Unit

- Full bottom shelf measuring 24" x 36"

Single Sided Unit

- Open base design

Frame Only	Overall D x W x H	Model No.	Wt.
Double Sided Frame	24 x 36 x 66-1/2	IF-2436-5PYTL	85
Single Sided Frame	24 x 39 x 66-1/2	IF1S-2436-5PYTL	50

Available Accessories - All Purchased Separately

Shelf - Flush Edge

- 11"D x 33-3/4"W

Shelf - 1-1/2" Lips:

- 11"D x 33-3/4"W

Pegboard Panel:

- Panel height: 24"
- 16 gauge steel panel
- Holes on 1" centers

Louvered Panel:

- Panel height: 24"
- 16 gauge steel panel

Bin Rail:

- 16 gauge steel louvered panel
- Single row 6" high

Description	Model No.	Size	Wt.
Flush Shelf	IF-SHELF-36	11"D x 34"W	24
Lipped Shelf	IF-SHELF-LU-36	11"D x 34"W	24
Pegboard Panel	IF-PB-36	24"D x 34"W	20
Louvered Panel	IF-LP-36	24"D x 34"W	20
Bin Rail	IF-BR-36	6"D x 34"W	7



Model
IF-2436-5PYTL
Double Sided Frame
Shown with:
(2) IF-SHELF-LU-36 (front)
(2) IF-SHELF-36 (back)
(1) IF-LP-36 (front)
(1) IF-BR-36 (back)



Model
IF-2436-5PYTL
Double Sided Frame
Shown with:
(1) IF-PB-36 (front)
(2) IF-SHELF-LU-36 (back)
(1) IF-SHELF-36 (front)
(1) IF-LP-36 (back)
(2) IF-BR-36 (front)



Model
IF1S-2436-5PYTL
Single Sided Frame

Model
IF1S-2436-5PYTL
Single Sided Frame
Shown with:
(1) IF-PB-36
(1) IF-LP-36
(1) IF-SHELF-36



Distributed by:
Custom Equipment Company
866-333-0728
tom@custommhs.com
www.custommhs.com



Mobile A-Frame – Lean Tool Cart

1200 lbs. Capacity

- 16 gauge steel pegboard
- Pegboard has holes on 1” centers
- Louvered panel accommodates all sizes of hanging bins
- Panel height: 48”
- Overall height: 56”
- Ships fully assembled, ready for immediate use
- Two rigid and two swivel casters
- 5” polyurethane wheels
- Powder coated gray finish
- All-welded construction
- Pegs and bins not included



Model
AFPBLP-2436-5PY



Model
AFPB-2460-5PY



Model
AFCP-2436-5PY

Size	Double Sided Pegboard		Double Sided Louvered		1 Pegboard Side & 1 Louvered Side		Combo Pegboard/Louvered Panel on Both Sides	
	Model No.	Wt.	Model No.	Wt.	Model No.	Wt.	Model No.	Wt.
24 x 36	AFPB-2436-5PY	120	AFLP-2436-5PY	120	AFPBLP-2436-5PY	120	AFCP-2436-5PY	120
24 x 48	AFPB-2448-5PY	143	AFLP-2448-5PY	143	AFPBLP-2448-5PY	143	AFCP-2448-5PY	143
24 x 60	AFPB-2460-5PY	170	AFLP-2460-5PY	170	AFPBLP-2460-5PY	170	AFCP-2460-5PY	170

Mobile Pegboard A-Frame – 60” Tall

1200 lbs. Capacity

- Panels measure 60” tall x 48” wide
- 16 gauge steel pegboard panels
- Pegboard has holes on 1” centers
- 5” non-marking polyurethane wheels
- Two rigid and two swivel casters with total lock brakes
- Overall height: 68”
- Available as a single-sided or double-sided unit
- Pegs and bins not included

A-Frame	Model No.	Wt.
Single-sided	AFPB1S2448-TL60	107
Double-sided	AFPB2S2448-TL60	163



Model
AFPB2S2448-TL60

Mobile Pegboard with Back Shelf Storage

2000 lbs. Capacity

- A-Frame pegboard height: 48”
- Four storage shelves on the back side
- 16 gauge steel pegboard
- Pegboard 1/4” diameter holes
- Two rigid and two swivel casters with floor lock
- 6” polyurethane wheels
- Overall height: 60”

Size	Model No.	Wt.
24 x 36	AFPBS2436-6PYFL	186
24 x 48	AFPBS2448-6PYFL	224
24 x 60	AFPBS2460-6PYFL	262



Model
AFPBS2436-6PYFL



Side view



Model
IPB-6PYFL

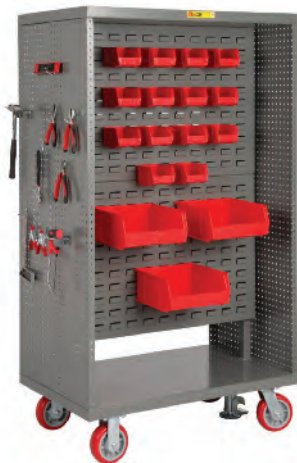


Model
ILP-6PYFL

Double Sided Pegboard or Louvered Panel Cart

- Double sided pegboard or louvered panels
- Two rigid and two swivel casters with floor lock
- 6" x 2" non-marking polyurethane wheels
- Tubular steel handle
- Panels measuring 36" wide x 48" tall
- All-welded construction

Deck Size	Pegboard Panels	Wt.	Louvered Panels	Wt.
30 x 36	IPB-6PYFL	175	ILP-6PYFL	175



Model
BCPB-2438-6PYFL

5S Lean Cart

- All-welded construction
- 24"W x 55" tall pegboard panel on each end
- Center mounted, double-sided louvered panel
- Louvered panels measure 36"W x 48" tall
- Two rigid and two swivel casters with floor lock
- 6" x 2" non-marking polyurethane wheels
- Overall dimensions: 24"D x 38"W x 65-1/2"H

Size	Model No.	Wt.
24 x 38	BCPB-2438-6PYFL	212



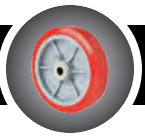
Model
MWLP-2436-5TL

Maintenance Workstation with Pegboard or Louvered Storage

1200 lbs. Capacity

- 16 gauge steel pegboard or louvered panel
- Top shelf height: 34"
- 1-1/2" retaining lip on three sides
- Two rigid and two swivel casters with total lock brakes
- 5" non-marking polyurethane wheels
- Powder coated gray finish

	Shelf Size	Model No.	Wt.
Louvered Panel	24 x 36	MWLP-2436-5TL	102
Pegboard Panel	24 x 36	MWPB-2436-5TL	102



Wheel Selection Guide

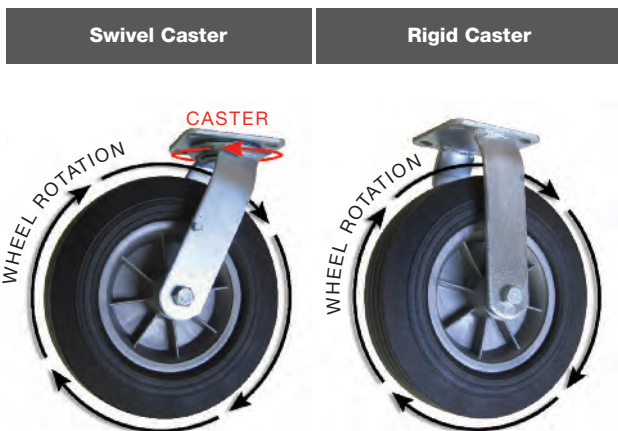
How to choose a wheel

- Load capacity
- Push start force
- Rolling/Floor conditions
- Durability/Duty requirements

Typical Factory Floor	Rough/Uneven/Outdoor
<p><i>Polyurethane</i> <i>Phenolic</i> <i>Mold-On Rubber</i></p>	<p><i>Pneumatic</i> <i>Solid Rubber</i> <i>Flat-Free</i></p>

Phenolic	Polyurethane	Mold-On Rubber	Solid Rubber	Flat-Free	Pneumatic
Most	<Load Capacity>	Least	Least	<Maintenance>	Most
Least	<Cushion>	Most	Least	<Cushion>	Most
<p>Load Capacity Range per Caster Set (4): 3600-5000 lbs.</p> <p>Chemical Resistant High Temperature Non-marking</p> <p>Applications: Least rolling resistance, but does not absorb vibrations</p>	<p>Load Capacity Range per Caster Set (4): 1200-4000 lbs.</p> <p>Non-marking Tread Chemical Resistant Quiet Operation</p> <p>Applications: Industrial, Warehouse, Institutional</p>	<p>Load Capacity Range per Caster Set (4): 2000-2400 lbs.</p> <p>Cushion Tread Absorbs shock/vibration Floor Protection Quiet Operation</p> <p>Applications: Industrial & Warehouse</p>	<p>Load Capacity Range per Caster Set (4): 1200-1600 lbs.</p> <p>Cushioned rubber tire that is more stable and easier to roll under heavy loads than pneumatic.</p> <p>Rugged and maintenance free.</p>	<p>Load Capacity Range per Caster Set (4): 1600 lbs.</p> <p>Wide Rubber tread disperses the load better over irregular or softer surfaces. Less tread compression than pneumatic or solid rubber tires. Only available with off-set hub.</p>	<p>Load Capacity Range per Caster Set (4): 1200-4000lbs.</p> <p>Air Filled rubber tire on a metal hub is able to easily roll over uneven surfaces and bumps.</p> <p>Requires air pressure.</p>

Swivel vs. Rigid Caster



Wheel Brake Options

Total Lock Brakes	Swivel Position Lock	Wheel Brakes	Floor Lock
<p>Locks both the rotation of the wheel, as well as the swivel of the caster.</p> <p>Only available on the 5" polyurethane caster.</p>	<p>Converts swivel caster to rigid by locking the swivel movement.</p> <p>Only available on the 8" Heavy-Duty phenolic caster.</p>	<p>Locks the rotation of the wheel. Does not lock the swivel movement of the caster.</p> <p>Wheel brakes are required on each swivel caster to effectively lock the cart in position.</p>	<p>Positioned between swivel casters to lift casters slightly off ground, preventing any unwanted movement.</p> <p>Floor Locks are available on most units with 6" or 8" casters.</p>



Wheel Selection Guide

Polyurethane Wheels

Load Capacity Range:
300 – 1,000 lbs.



Characteristics: Easier rolling for higher capacities, long-lasting, chemical resistant, non-marking and quiet operation.

A polyurethane tread is superior for industrial, warehouse, and institutional applications with a great combination of easy rolling and maneuverability under heavy load capacity while able to quietly roll over rough floor surfaces.

Phenolic Wheels

Load Capacity Range:
900 – 1,250 lbs.



Characteristics: Best rolling for heavy load capacities, long-lasting, chemical resistant, high temperature, non-marking for smooth floor surface.

A solid one piece wheel that is high pressure molded with reinforced fiber-filled phenolic resin. Offers the least rolling resistance on smooth floors, but does not absorb vibration over rough surfaces.

Mold-On Rubber Wheels

Load Capacity Range:
500 – 600 lbs.



Characteristics: Better load capacity, long-lasting, cushion tread, absorbs shock and vibration, floor protection and quiet operation.

Rubber tread vulcanized to metal core. A good combination of load capacity and cushion tread that quietly rolls over rough floors. A great wheel choice for heavy industrial and warehouse applications.

Solid Rubber Wheels

Load Capacity Range:
300 – 400 lbs.



Characteristics: Good load capacity, great for rough floor surfaces, puncture-proof, floor protection and quiet operation.

Cushioned rubber tire that is more stable and easier to roll under heavy loads than pneumatic wheels. These wheels are a rugged, maintenance-free (no air pressure to maintain) alternative to pneumatic wheels.

Pneumatic Wheels

Load Capacity Range:
300 – 400 lbs.



Characteristics: Great cushion ride over rough floor surfaces, best option for traveling over small obstructions or outdoor applications. Best shock and vibration absorption.

An air filled rubber tire on a metal hub is able to easily roll over uneven surfaces and bumps but does require air pressure management. Under heavy loads, the pneumatic tire profile will compress, creating greater rolling resistance. Ideal for handling fragile loads over rough surfaces.

Flat Free Hand Truck Wheels

Load Capacity Range:
400 lbs.



Characteristics: Wide rubber tread disperses the load better over irregular or softer surfaces. Less tread compression than pneumatic or solid rubber tires and precision ball bearings improve rollability of heavier loads.

Wheel Specifications

Wheel Diameter	Tread Width	Wheel Type	Bearing I.D.	Centered Hub Model No.	Offset Hub Model No.
5	1-1/4	Polyurethane	3/8" Ball	WHMP-05114	-
6	2	Mold-On Rubber	3/4" Roller	WHMS-0620	-
		Polyurethane	1/2" Ball	WHMP-0620	-
8	2	Phenolic	3/4" Roller	WHPL-0620	-
		Mold-On Rubber	3/4" Roller	WHMS-0820	-
		Polyurethane	1/2" Ball	WHMP-0820	-
8	2-1/2	Phenolic	3/4" Roller	WHPL-0820	-
8	2-1/2	Solid Rubber	5/8" Ball	-	WHSP-0825-0
9	3	Pneumatic 2.80/2.50-4	5/8" Ball	WHPN-0830	-
10	2-3/4	Solid Rubber	5/8" Ball	WHSP-1027P-C	WHSP-1027-P
10	3-1/2	Pneumatic 4.10/3.50-4	5/8" Ball	WHPN-1035-C	WHPN-1035
10	3-1/2	Flat Free	5/8" Ball	-	WHFF-1035
12	2-1/2	Mold-On Rubber	1" Roller	WHMS-12250	-
12	3-1/2	Pneumatic 4.10/3.50-6	5/8" Ball	WHPN-1235	-
		Pneumatic 4.10/3.50-6	1" Roller	WHPN-1235-RB	-
16	4	Pneumatic 4.80/4.00-8	1" Roller	WHPN-1640	-