

Easy **50**

EASY CLIMBING LADDERS

- 50° ANGLE ALLOWS FORWARD DESCENT
- 450 LB. LOAD RATING EXCEEDS OSHA AND ANSI
- 3 TO 15 STEP LADDER SIZES
- SET-UP STEEL CONSTRUCTION

 POWDER COATED TOUGH™



3 STEP
MODEL 1203N1820A1



4 STEP
MODEL 1204R2630E4A3



8 STEP
MODEL 1208R2632A1

Easy 50

EASY CLIMBING LADDERS

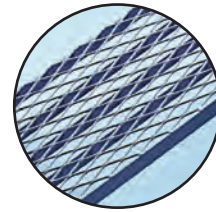


- 50 DEGREE CLIMBING ANGLE PERMITS FORWARD DESCENT TO COMPLY WITH ANSI STANDARDS
- 3 TO 15 STEP STANDING HEIGHTS UP TO 12 1/2'
- TWO TREAD TYPES, THREE WIDTHS
- 450 LB. LOAD CAPACITY RATING AND RUGGED ALL STEEL CONSTRUCTION MEETS OR EXCEEDS OSHA 1910.29 AND ANSI A14.7 STANDARDS
- 1200 SERIES 3 TO 8 STEP SHIP SET-UP. ELIMINATES ON-SITE ASSEMBLY
- 1700 SERIES 9 TO 15 STEP SHIP PACKAGED IN WELDED SUBASSEMBLIES
- 3 AND 4 STEP ARE EQUIPPED WITH RETRACTABLE 2" SPRING LOADED CASTER SYSTEM
- 5 STEP AND ABOVE USE 4" DIA. SAFE-LOCK CASTER SYSTEM
- STANDARD 12" DEEP TOP STEP
- STANDARD GRAY POWDER COATED COLOR. NO CHARGE OPTIONS ARE YELLOW, BEIGE, DARK BROWN & ORANGE
- CAL/OSHA MODELS ALSO AVAILABLE

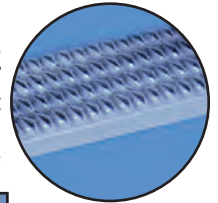
POWDER COATED TOUGH™

FEATURES

A1 EXPANDED METAL STEPS
durable and self cleaning.

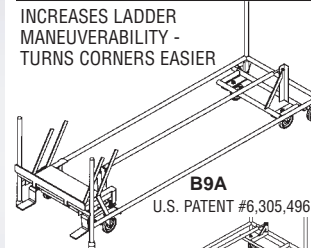


A3 GRIP STRUT
heavy duty, most rugged self-cleaning step available

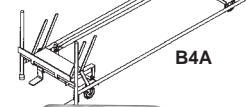


SAFE LOCK
standard on 5 to 15 step ladders, optional on some 4 step models.

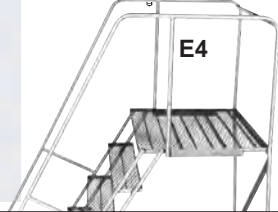
INCREASES LADDER MANEUVERABILITY - TURNS CORNERS EASIER



B9A
U.S. PATENT #6,305,496



B4A



E4
24" DEEP TOP STEP INCREASES STANDING ROOM ON TOP STEP.
SERIES 1200
A1 TREAD
A3 TREAD
SERIES 1700
A1 TREAD
A3 TREAD

OPTIONS

OPTION B9A SIX WHEEL SAFE-LOCK FOR LARGER LADDERS:
This safe-lock system adds casters to allow easy movement around corners. Available on 9 to 15 step models, add to price.
OPTION B4A FOUR WHEEL DUAL END SAFE-LOCK
on 5-8 step models, add to price.

DESCRIPTION: NO. OF STEPS INCLUDING TOP STEP	TOP STEP HEIGHT	OVERALL HEIGHT	18" WIDE AT TOP					26" WIDE AT TOP					32" WIDE AT TOP				
			MODEL NO.	BASE W"xL"	A1 TREAD	A3 TREAD	SHPG. WT.	MODEL NO.	BASE W"xL"	A1 TREAD	A3 TREAD	SHPG. WT.	MODEL NO.	BASE W"xL"	A1 TREAD	A3 TREAD	SHPG. WT.
3 NO RAILS	30"	30"	1203N1820	20x32			39	1203N2630	30x32			46	-	-			-
3 HANDRAILS	30"	60"	1203R1820	20x32			46	1203R2630	30x32			54	-	-			-
4 HANDRAILS	40"	40"	1204N1820	20x40			49	1204N2630	30x40			58	1204N3232	32x40			67
4 HANDRAILS	40"	70"	1204R1820	20x40			56	1204R2630	30x40			65	1204R3232	32x40			79
5 HANDRAILS	50"	80"	1205R1820	20x51			86	1205R2630	30x51			100	1205R3232	32x51			116
6 HANDRAILS	60"	90"	1206R1824	24x60			108	1206R2630	30x60			123	1206R3232	32x60			143
7 HANDRAILS	70"	100"	1207R1824	24x69			125	1207R2630	30x69			142	1207R3232	32x69			165
8 HANDRAILS	80"	110"	1208R1824	24x76			139	1208R2632	32x78			159	1208R3232	32x78			184
9 HANDRAILS	90"	120"	-	-			-	1709R2632	32x88			187	1709R3232	32x88			216
10 HANDRAILS	100"	130"	-	-			-	1710R2632	32x97			200	1710R3232	32x97			233
11 HANDRAILS	110"	140"	-	-			-	1711R2632	32x106			213	1711R3232	32x106			249
12 GUARDRAILS	120"	162"	-	-			-	1712R2632	32x116			338	1712R3232	32x116			377
13 GUARDRAILS	130"	172"	-	-			-	1713R2642	42x125			371	1713R3242	42x125			413
14 GUARDRAILS	140"	182"	-	-			-	1714R2642	42x134			392	1714R3242	42x134			437
15 GUARDRAILS	150"	192"	-	-			-	1715R2642	42x143			415	1715R3242	42x143			463

NOTE: 12 thru 16 step ladders are palletized to protect against freight damage - add net to ladder price.

Distributed By: Custom Equipment Company
Tom McGovern, 866-333-0728
Sales: tom@custommhs.com
www.custommhs.com