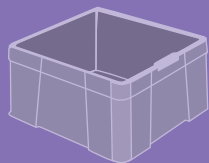


# Straight Wall Container System



## Straight Wall

Buckhorn's reusable Straight Wall Container System delivers total cost savings and efficiency throughout the supplier-to-manufacturer material handling process.

Our stack-only modular containers are ideal for closed loop shipping, in-process handling and storage applications where the same containers are used throughout.

- Containers cube 48" x 45" pallets
- Reinforced sides and bottoms enhance product protection
- Interworking sizes allow mixed stacking on pallet
- Perimeter dust skirt on select sizes for added product protection
- Compatibility with other brands to expand your existing system
- Injection molded HDPE construction for impact, moisture and chemical resistance
- Custom interior dunnage available
- Options: Lids, ID systems, dunnage, drain holes and cross-stacking bottoms



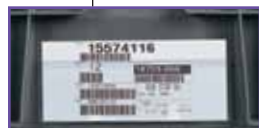
The modular design cubes the AIAG standard 48" x 45" pallet for maximum space usage.

**Compatible with RFID Systems**

**Lids**  
Protect contents against dust, dirt and other contaminants. Attached lid option available (model SA15121002)

**Straight Wall Design**  
Straight, smooth interior walls allow for maximum cube and easy insertion of dunnage

**Reinforced Corner Ribbing**  
Provides maximum column strength for secure stacking



**Identification Areas**  
Located on all four sides. Identification of contents is easy with optional cardholders, label placards, and hot stamping **See page 58 for details**

**Ergonomic Handles**  
For enhanced comfort, efficiency and safety when lifting loaded containers

**Pallet Perimeter Lip**  
Provides load stability and prevents container from shifting

### Did You Know...?

You can use different color hot stamps for additional container identification.

## Cross Cube Containers



Our **SX model Cross Cube Containers** have a special bottom-grid design that facilitates stacking of larger containers on top of smaller containers. 10 sizes available with this feature.

**See page 26**

- Optimize pallet space with vertically modular loads
- Improve line space usage
- Sequence parts by usage
- Reinforced bottom for secure stacking

## Pallet & Top Cap Systems (See pages 10-11 for complete details)



4-way entry pallets feature:

- Dynamic weight capacity of 3,000-8,000 lbs. (varies by pallet model)\*
- Perimeter lips available on each pallet
- 2-side or 4-side Pallet Lock "Seat Belt" System

\*Based on equally distributed load at room temperature of 73°F (+/-5°)



**Top Caps increase stability by:**

- Securing top layer of palletized containers and protecting contents
- Accommodating optional Pallet Lock "Seat Belt" System to further secure stacks



# Straight Wall Container System Specifications



SW12070502



SW15120602



SW151208A2  
SX151208A4  
w/dust skirt



SW15121002



SW24111002



SW241504A2  
SX241504A4  
w/dust skirt



SW24150602



SW241508A2  
SX241508A4  
w/dust skirt



SW24151002  
SX24151000



SW241511A2  
SX241511A4  
w/dust skirt



SW24151502  
SX24151500  
w/dust skirt



SW242208A2  
SX242208A4  
w/dust skirt



SW242211A2  
SX242211A4



SW242215A2  
SX242215A4  
w/dust skirt



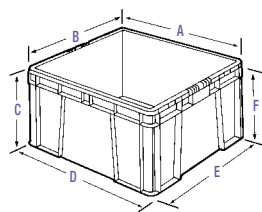
SW48150802  
SX48150800

(Not pictured SW32150802)

Model No.	Description	Dimensions					Inside Usable Height H"(F)	Weight lbs	Weight Capacity lbs	Volume Cu.Ft.	Trailer Capacity	
		L"(A)	Outside Top W"(B)	H"(C)	Inside Bottom L"(D)	W"(E)					48"	53"
SW12070502	Solid Bottom/Sides	12	7.5	5	9.38	5.44	4.38	1.2	60	0.13	10,368	11,232
		305	191	127	238	138	111	0.5	27	3.66	—	—
SW15120602	Solid Bottom/Sides	15	12	5.5	13	9.38	4.88	2.3	100	0.34	4896	5304
		381	305	140	330	238	124	1.0	45	9.75	—	—
SW151208A2	Solid Bottom/Sides	15	12	7.5	13	9.38	6.88	2.5	100	0.49	3456	3744
		381	305	191	330	238	175	1.1	45	13.75	—	—
SW15121002	Solid Bottom/Sides	15	12	9.5	13	9.38	8.88	3.5	100	0.63	2592	2808
		381	305	241	330	238	226	1.6	45	17.75	—	—
SW24111002	Solid Bottom/Sides	24	11	9.5	21.38	9.13	8.88	4.3	100	1.00	2016	2160
		610	279	241	543	232	226	2.0	45	28.41	—	—
SW241504A2	Solid Bottom/Sides	24	15	4	21.38	13	3.38	2.9	100	0.54	3456	3744
		610	381	102	543	330	86	1.3	45	15.40	—	—
SW24150602	Solid Bottom/Sides	24	15	5.5	21.38	13	4.88	3.7	100	0.78	2448	2652
		610	381	140	543	330	124	1.7	45	22.23	—	—
SW241508A2	Solid Bottom/Sides	24	15	7.5	21.38	13	6.88	4.1	100	1.11	1728	1872
		610	381	191	543	330	175	1.9	45	31.34	—	—
SW24151002	Solid Bottom/Sides	24	15	9.5	21.38	13	8.88	5.3	100	1.43	1296	1404
		610	381	241	543	330	226	2.4	45	40.45	—	—
SW241511A2	Solid Bottom/Sides	24	15	11	21.38	13	10.38	5.1	100	1.67	1152	1248
		610	381	279	543	330	264	2.5	45	47.28	—	—
SW24151502	Solid Bottom/Sides	24	15	14.5	21.38	13	13.88	6.9	100	2.23	864	936
		610	381	368	543	330	353	3.1	45	63.23	—	—
SW242208A2	Solid Bottom/Sides	24	22	7.5	21.38	20.38	6.88	5.8	100	1.73	1152	1248
		610	559	191	543	518	175	2.6	45	49.13	—	—
SW242211A2	Solid Bottom/Sides	24	22	11	21.38	20.38	10.38	7.6	100	2.62	768	832
		610	559	279	543	518	264	3.4	45	74.12	—	—
SW242215A2	Solid Bottom/Sides	24	22	14.5	21.38	20.38	13.88	8.9	100	3.50	576	624
		610	559	368	543	518	353	3.9	45	99.12	—	—
SW32150802	Solid Bottom/Sides	32	15	7.5	29.38	13	6.88	5.6	100	1.52	1152	1248
		813	381	191	746	330	175	2.5	45	43.07	—	—
SW48150802	Solid Bottom/Sides	48	15	7.5	45.38	13	6.88	7.5	100	2.35	864	936
		1219	381	191	1153	330	175	3.4	45	66.52	—	—

Capacity is dependent upon application and use environment. Check with Buckhorn for suitability in your application. Specifications subject to change without notice. All dimensions are approximate.

## Straight Wall Containers



- Stock Color: Dark Gray
- Models SW15120602, SW151208A2, SW24150602, and SW241508A2 also available in Green, Dark Blue
- Other colors available, minimum order required

= In Stock Items

